

Album Express User Manual

Copyright © 1999-2008, Fookes Software, Switzerland

Album Express

Organizes Your Pictures into Web Albums

by Eric Fookes

Album Express is a great tool for creating slick, professional-looking picture albums for home, friends, and the Web. Its wizard-like interface and built-in templates make it easy to present your pictures in style: you can produce a slide show, create an index, catalog your pictures, and build a fully searchable image database -- all with just a few clicks of the mouse.

Album Express

Copyright © 1999-2008, Fookes Software, Switzerland

All rights reserved. No parts of this work may be reproduced in any form or by any means - graphic, electronic, or mechanical, including photocopying, recording, taping, or information storage and retrieval systems - without the written permission of the publisher.

Products that are referred to in this document may be either trademarks and/or registered trademarks of the respective owners. The publisher and the author make no claim to these trademarks.

While every precaution has been taken in the preparation of this document, the publisher and the author assume no responsibility for errors or omissions, or for damages resulting from the use of information contained in this document or from the use of programs and source code that may accompany it. In no event shall the publisher and the author be liable for any loss of profit or any other commercial damage caused or alleged to have been caused directly or indirectly by this document.

Printed: March 2008 in Charmey, Switzerland

Publisher

Fookes Software

Managing Editor

Eric Fookes

Special thanks to:

All the people who contributed to this document, especially David Nourse who improved the text considerably.

Last not least, we want to thank EC Software who wrote this great help tool called HELP & MANUAL which printed this document.

Table of Contents

Foreword	0
Part I General Information	1
1 Introduction	1
2 Trial Version Limitations	1
3 Install and Uninstall	1
Installation	1
Setup Command-Line Parameters	3
Setup Exit Codes	5
How to Uninstall	5
4 Quick Start	6
5 Frequently Asked Questions	7
Part II Reference Information	8
1 Program Layout	8
2 Program Tabs	9
1. Main Settings	9
2. List of Pictures	10
3. Page Details	11
4. Make Album	12
Upload Album (tab 4)	13
5. Albums List	15
Options-1	15
Options-2	16
Template Editor	18
News	18
3 Program Menu	18
File menu	18
Edit menu	19
Help menu	20
4 Templates	20
Sample Templates	20
Creating Templates	21
Album Options	22
Template Fields	27
Template Wizards	33
Masked Input Fields	34
Mathematical Operators	36
5 Miscellaneous	36
Thumbnail Generator	36
Image Preview Window	38
Date and Time Filters	38
File Filters Wildcards	39
Command-line Parameters	39
Understanding Browsers.dat	40

Part III Purchasing and License Agreement	41
1 Ordering Information	41
2 Site Licenses	42
3 Refund Policy	42
4 End User License Agreement	43
Part IV Other Information	47
1 Contacting Fookes Software	47
2 Other Fookes Software Titles	48
3 Trademarks	48
4 Acknowledgements	48
Index	50

1 General Information

1.1 Introduction

Album Express is a Windows tool for creating slick, professional-looking picture albums for home, friends, and the Web. Its wizard-like interface and built-in templates make it easy to present your pictures in style: you can produce a slide show, create an index, catalog your pictures, and build a fully searchable image database — all with just a few clicks of the mouse.

If you're a computer novice, you'll love this program's ease of use. Just select the pictures you want, select a template, and watch Album Express assemble your creation in no time — editing Web pages was never like this! Your picture collection comes complete with standard navigation tools, and you can even include a background image for added impact. Whether you want to view your albums at home, using your favorite browser, or upload them to your home page on the Internet, it's as easy as clicking on a mouse button.

Album Express is also an ideal tool for power users. Its full-featured scripting language will enable you to build your own album templates, allowing almost unlimited creativity in developing display styles and techniques. Demonstration templates are provided to show you some of the possibilities: you can build framed pages, allowing pictures to be selected from thumbnail images, or take advantage of the multimedia potential of HTML by associating pictures with MIDI tracks or sound clips — the sky's the limit.

Remember that if a picture can convey a thousand words, your picture albums can build a virtual library!

See the [Quick Start](#) topic for the basic steps to creating your own albums.

*Album Express is a trademark of Fookes Software.
All other trademarks are the property of their respective owners.*

1.2 Trial Version Limitations

The Album Express trial version will run for one month starting from the moment you first execute the program. Make sure that your system clock is set to the correct date before you run Album Express. Altering the system clock during the evaluation period may reduce the days you can use Album Express or even end the trial. Also, photo albums created with the trial version include the tag "Created with Album Express", which is not shown in those created with the retail version of Album Express. For the rest, the features in the trial version are identical to the retail version.

1.3 Install and Uninstall

1.3.1 Installation

You can install Album Express over a previous copy if you want to keep all your settings. However, we recommend that you choose a different folder if you are upgrading from a version older than 4.x or installing a trial version.

Do not install a trial copy over a registered version of Album Express; once the trial period ends you will not be able to run Album Express again until you reinstall your registered copy. If you have an earlier trial or beta version on your computer, uninstall it before installing Album Express.

To install Album Express, just execute the Setup program (Setup.exe or a similar name) and follow the instructions. If you are a system administrator, see the topic [Setup Command-Line Parameters](#) for details on controlling the Album Express Setup process. See also the [Setup Exit Codes](#) topic.

If Album Express fails to run when you launch it, please scan your computer for viruses. Album Express will not run if it becomes infected by a virus or if it detects attempts to infect it. If you are sure that your computer has no viruses and Album Express still doesn't run, please [contact us](#) so that we can help you resolve the issue.

See the [How to Uninstall](#) topic for details about removing Album Express from your computer.

System Requirements

- Windows 95/98/2000/2003/NT4/Me/XP/Vista
- 4.0 MB of free disk space
- 32 MB of RAM
- Super VGA, 16-bit or higher monitor
- 800 x 600 or higher screen resolution

Storage Location for User Data

Album Express 4 is designed to work under multi-user environments and stores user settings and data under the Application Data folder (AppData under Windows Vista). Earlier versions of Album Express stored such files by default under the Album Express program folder. Unless you are working under Windows Vista or a limited user account, you can instruct Album Express to work the old way and use the program folder as the main storage location instead of the Application Data folder. To do so, simply place the program INI file in the same folder as the Album Express program file (Album.ini). An empty INI file will do the trick.

If you install Album Express 4.x over an earlier version of Album Express, then user data will be stored in the same folders as before; if you want to have user data stored under the Application Data folder, then simply move the INI file to the "Application Data\Album Express" folder ("AppData\Roaming" instead of "Application Data" under Windows Vista).

IMPORTANT: You should not store Album Express settings under the Program Files folder if you are working in a multi-user environment, or are running Windows Vista, or running Windows XP without administrative privileges. Furthermore, if you choose to store your settings under the Program Files folder, it is your responsibility to backup any Album Express templates that you have modified before installing updates. Installing Album Express updates replaces such files under the program folder with the default copies.

How to Transfer Old Settings to Album Express 4

The program settings are stored in Album.ini. By default, you will find this file in the following location:

```
C:\Program Files\Album Express\
```

Close Album Express and then copy the Album.ini file to the following location; note that <user> represents the name you use to log on to Windows:

On Windows XP/2000:

```
C:\Documents and Settings\\Application Data\Album Express\
```

On Windows Vista:

```
C:\Users\\AppData\Roaming\Album Express\
```

On a Windows 98 system without individual user logins:

C:\Windows\Application Data\Album Express\

On a Windows 98 system with individual user logins:

C:\Windows\Profiles\\Application Data\Album Express\

On a Windows NT system:

C:\Winnt\Profiles\\Application Data\Album Express\

1.3.2 Setup Command-Line Parameters

The Setup program accepts optional command line parameters. These can be useful to system administrators, and to other programs calling the Setup program.

/SP-

Disables the "This will install... Do you wish to continue?" prompt at the beginning of Setup.

/SILENT, /VERYSILENT

Instructs Setup to be silent or very silent. When Setup is silent the wizard and the background window are not displayed but the installation progress window is. When a setup is very silent this installation progress window is not displayed. Everything else is normal so for example error messages during installation are displayed and the startup prompt is (if you haven't disabled it with the '/SP-' command line option explained above.)

If a restart is necessary and the '/NORESTART' command isn't used (see below) and Setup is silent, it will display a "Reboot now?" message box. If it's very silent it will reboot without asking.

/SUPPRESSMSGBOXES

Instructs Setup to suppress message boxes. Only has an effect when combined with '/SILENT' and '/VERYSILENT'.

The default response in situations where there's a choice is:

- Yes in a 'Keep newer file?' situation.
- No in a 'File exists, confirm overwrite.' situation.
- Abort in Abort/Retry situations.
- Cancel in Retry/Cancel situations.
- Yes (=continue) in a DiskSpaceWarning/DirExists/DirDoesntExist/NoUninstallWarning/ExitSetupMessage/ConfirmUninstall situation.
- Yes (=restart) in a FinishedRestartMessage/UninstalledAndNeedsRestart situation.

5 message boxes are not suppressible:

- The About Setup message box.
- The Exit Setup? message box.
- The FileNotInDir2 message box displayed when Setup requires a new disk to be inserted and the disk was not found.
- Any (error) message box displayed before Setup (or Uninstall) could read the command line parameters.
- Any message box displayed by [Code] support function MsgBox.

/LOG

Causes Setup to create a log file in the user's TEMP directory detailing file installation and execution actions taken during the installation process. This can be a helpful debugging aid. For example, if you suspect a file isn't being replaced when you believe it should be (or vice versa), the log file will tell you if the file was really skipped, and why.

The log file is created with a unique name based on the current date. (It will not overwrite or append to

existing files.)

The information contained in the log file is technical in nature and therefore not intended to be understandable by end users. Nor is it designed to be machine-parseable; the format of the file is subject to change without notice.

/LOG="filename"

Same as /LOG, except it allows you to specify a fixed path/filename to use for the log file. If a file with the specified name already exists it will be overwritten. If the file cannot be created, Setup will abort with an error message.

/NOCANCEL

Prevents the user from cancelling during the installation process, by disabling the Cancel button and ignoring clicks on the close button. Useful along with '/SILENT' or '/VERYSILENT'.

/NORESTART

Instructs Setup not to reboot even if it's necessary.

/RESTARTEXITCODE=exit code

Specifies the custom exit code that Setup is to return when a restart is needed. Useful along with '/NORESTART'. Also see [Setup Exit Codes](#).

/LOADINF="filename"

Instructs Setup to load the settings from the specified file after having checked the command line. This file can be prepared using the '/SAVEINF=' command as explained below.

Don't forget to use quotes if the filename contains spaces.

/SAVEINF="filename"

Instructs Setup to save installation settings to the specified file. Don't forget to use quotes if the filename contains spaces.

/DIR="x:\dirname"

Overrides the default directory name displayed on the Select Destination Location wizard page. A fully qualified pathname must be specified.

/GROUP="folder name"

Overrides the default folder name displayed on the Select Start Menu Folder wizard page.

/NOICONS

Instructs Setup to initially check the Don't create any icons check box on the Select Start Menu Folder wizard page.

/COMPONENTS="comma separated list of component names"

Overrides the default components settings. Using this command line parameter causes Setup to automatically select a custom type.

/TASKS="comma separated list of task names"

Specifies a list of tasks that should be initially selected or deselected. To deselect a task, prefix its name with a "!" character.

Only the specified tasks (and their children) will be selected; the rest will be deselected. Use the /MERGETASKS parameter instead if you want to keep the default set of tasks and only select/deselect some of them.

Examples:

Deselect all tasks, then select the "desktopicon" and "fileassoc" tasks:

`/TASKS="desktopicon,fileassoc"`

Deselect all tasks, then select a parent task item, but exclude one of its children:
`/TASKS="parent,!parent\child"`

`/MERGETASKS="comma separated list of task names"`

Like the `/TASKS` parameter, except the specified tasks will be merged with the set of tasks that would have otherwise been selected by default.

If `UsePreviousTasks` is set to yes, the specified tasks will be selected/deselected after any previous tasks are restored.

Examples:

Keep the default set of selected tasks, but additionally select the "desktopicon" and "fileassoc" tasks:
`/MERGETASKS="desktopicon,fileassoc"`

Keep the default set of selected tasks, but deselect the "desktopicon" task:
`/MERGETASKS="!desktopicon"`

1.3.3 Setup Exit Codes

The Album Express Setup program may return one of the following exit codes:

- 0 Setup was successfully run to completion.
- 1 Setup failed to initialize.
- 2 The user clicked Cancel in the wizard before the actual installation started, or chose "No" on the opening "This will install..." message box.
- 3 A fatal error occurred while preparing to move to the next installation phase (for example, from displaying the pre-installation wizard pages to the actual installation process). This should never happen except under the most unusual of circumstances, such as running out of memory or Windows resources.
- 4 A fatal error occurred during the actual installation process.
Note: Errors that cause an Abort-Retry-Ignore box to be displayed are not fatal errors. If the user chooses Abort at such a message box, exit code 5 will be returned.
- 5 The user clicked Cancel during the actual installation process, or chose Abort at an Abort-Retry-Ignore box.
- 6 The Setup process was forcefully terminated by the debugger (Run | Terminate was used in the IDE).

Before returning an exit code of 1, 3, or 4, an error message explaining the problem will normally be displayed.

Future versions of the Album Express Setup program may return additional exit codes, so applications checking the exit code should be programmed to handle unexpected exit codes gracefully. Any non-zero exit code indicates that Setup was not run to completion.

1.3.4 How to Uninstall

If your Album Express package came with an installation program (Setup.exe or similar), you can uninstall it by using the Control Panel's Add/Remove Programs dialog box or the Uninstall Album Express icon in the Start menu. Otherwise, if you have a dedicated folder for the Album Express program, just delete that folder and all its underlying subfolders and files.

IMPORTANT: If Album Express was installed with Administrative privileges, you should then also uninstall Album Express under these conditions. Otherwise, Album Express might not be completely removed from your system.

1.4 Quick Start

When you use Album Express for the first time, the Samples folder is selected. This folder contains several sample photographs. To create your first album with minimal effort, just click on the "Quick Build" button. This will create a basic album with all the sample pictures displayed in the default layout based on the default folder. To see examples of more sophisticated albums, use the File|Open menu command and choose one of the demo album settings, then click on the "Quick Build" button. **For a nice photo-album style, try "Demo Default" or "Demo Photo Page".**

Most album settings are optional, so you can build albums very quickly. To create an album with your own pictures, all you need to do is select a folder (on the first screen) that contains browser-compatible pictures: .gif, .jpg, .jpeg, .jpe, and .png. Then choose a template and click on the "Quick Build" button. Of course, the more information you provide (page title, image descriptions, etc.), the more complete your album will be.

Note that the [sample templates](#) labeled Demo are designed to use only the sample pictures provided with the program. When you use those templates, some of your settings in the program will be disabled. Those demo templates are provided as an example for those who wish to design their own templates. You can change their behavior by editing them so that they will work with your own files.

Album Express is very flexible as its output is entirely controlled by templates, which you can customize. A template contains [sections](#) and [field anchors](#) that indicate where the corresponding data is inserted. See the topic [Creating templates](#) for more information.

Album Express collects all browser-compatible images from the folder(s) of your choice, and presents them in a grid on [tab #2](#). You can select rows and choose to exclude these from your album. When custom sorting is chosen, you can also sort the images any way you like by first selecting them and then using the arrow buttons to move them. You can fill in fields on the other tabs, which can then be displayed in the album based on the layout defined by the chosen template. A template can be designed to ignore fields that contain no text. You can create albums with multiple pages by limiting the number of pictures per page. Just enter the number in the field labeled "Max. pics/page" on [tab #3](#). Once you are satisfied with your settings, just click on the "Build Album" button on [tab #4](#), and then click on the "Preview Album" button to display it in your browser.

You can save your album settings by using the File|Save menu command. Use the File|Open menu command to reopen previous settings. If you want to reset all the fields, then use the File|New menu command. Do not confuse "album settings" with the "album files" that you display in your browser. Album settings are saved in files that contain information you used to create your album (i.e. album name, folder name, template, pictures to use, background image and colors, page title, etc.)

The album pages that are generated by the program are stored under the "Albums" subdirectory, unless you specify an alternative folder (on [tab #4](#)). Templates are placed in the "Templates" subdirectory, background pictures in the "Backgrounds" subdirectory, and saved album settings and image descriptions in the "Settings" subdirectory.

Helpful Tips:

- Right click over any field (the white areas) for shortcut menus with useful commands.
- Grayed fields are set that way by the template you choose or by Album Express, because the field or button is not available for use in the current context.
- Move your mouse cursor over fields and areas to display helpful tips in the status bar.
- You may click through the tabs and fill in or browse for information when using templates.
- Click on the Edit button right next to the template field ([tab #1](#)) to edit the selected template. Leave the field blank to create a new template.
- Open the [Preview window](#) by double-clicking on an image name listed in the grid ([tab #2](#)). Note

that image formats that are not supported by Album Express are displayed through the Windows Quick View utility or the application to which they are associated.

1.5 Frequently Asked Questions

I've got only 10 seconds left to create an album...

1. Select the folder that contains your pictures (see [tab #1](#)).
2. Choose a template for the type of album you want (Default is fine).
3. Click on the Quick Build button

How do I resize my pictures to fit in the screen view?

If you plan to publish your album on the Web, you should consider resizing the pictures physically before using them in an album. This has the advantage of also reducing the file size, so your viewers on the Web will experience less delay in seeing the album pages rendered on their computer. Album Express can either do this automatically for you, when you check the "Process images" box on the [Options-2](#) tab and define appropriate values in the Max. image width/height fields, or you can use the integrated [Thumbnail Generator](#).

If you don't plan to upload your albums to the Web, you can limit the size of your pictures without physically resizing them by unchecking the "Process images" box and setting the Max. image width/height fields available on the [Options-2](#) tab. Values are measured in pixels. Album Express will then use those values to proportionally resize images that exceed the specified dimensions. Leaving those fields blank, or setting them to zero, causes the pictures to be displayed in their actual size. You may, for example, enter a value for width and leave the height field blank. In this case, pictures will only be resized in your browser if they exceed the specified width.

For example, if you have set your screen resolution at 800x600 pixels, and you want your pictures to fit within that frame, set "Max. image width" to about 650 and "Max. image height" to about 450. To determine suitable maximum dimensions, you will have to take into account that part of the screen space is used up by the Windows Start bar and your browser's menu, toolbar, status bar, and scroll bars. The value may also have to be adapted to the type of template you choose for your album. Album Express makes it easy enough to rebuild your album, so you can test the output with different dimensions.

How do I open the integrated template editor?

Go to [tab #1](#) and click on the Edit button right next to the template field (with the document icon). If a template is selected in the field, it will be displayed in the editor; otherwise, you will be prompted to create a new template.

If you prefer, you can use an external editor instead of the internal one provided by Album Express. In the "Default template editor" field in [Options-2](#), just enter the full path name to the program you wish to use.

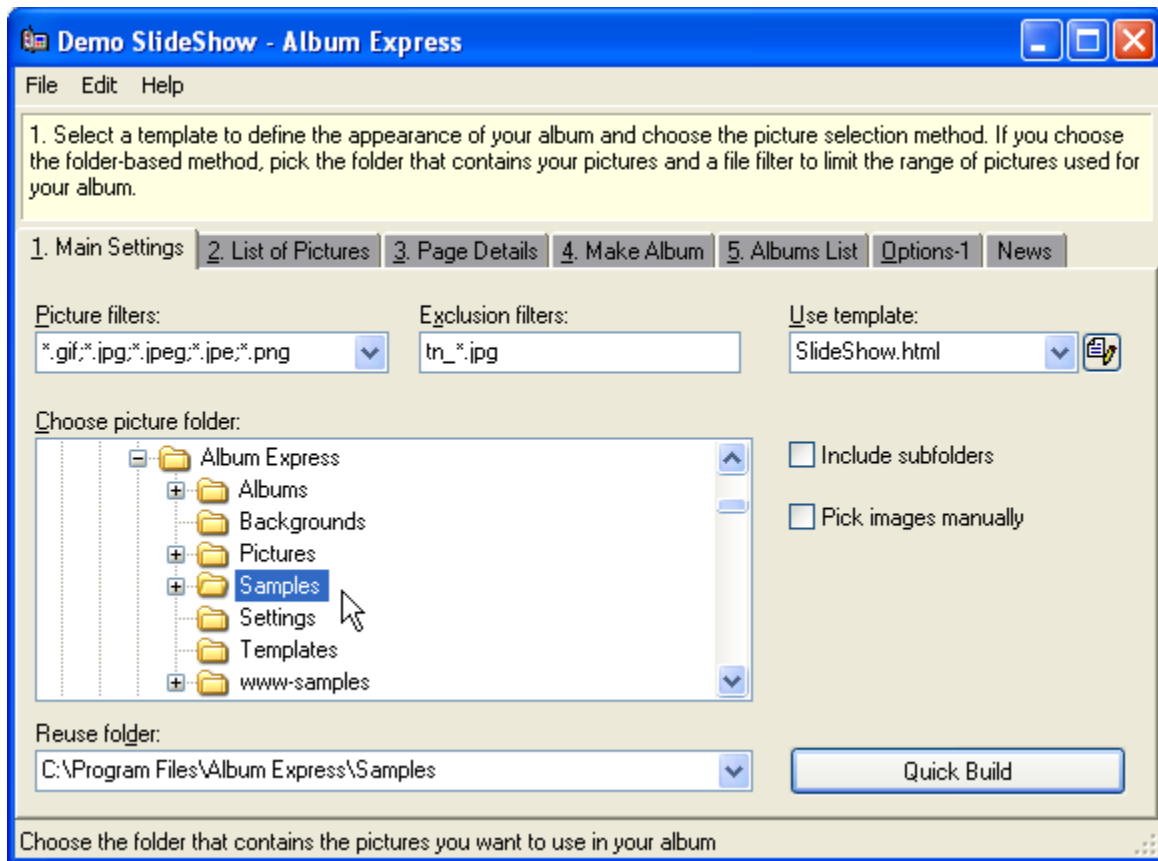
How do I create thumbnail pictures?

If you use the "Default", "Photo Page", "Frames", or "Demo-Midi" templates, Album Express will create the thumbnails automatically for you if they don't already exist. However, if you want more control over the quality of the thumbnail images, you can use the integrated [Thumbnail Generator](#) tool, which is available from the "File | Thumbnails" menu.

2 Reference Information

2.1 Program Layout

The following screen shot shows the main application window with the slide show template activated:



Album Express uses a wizard-like interface. The tab bar gives you access to the different screens available for album creation. An information panel is displayed above the tabs. It provides brief instructions about the selected tab. You can also see hint text in the status bar by moving the mouse pointer over the different parts of the program.

Many settings, like the window size and grid dimensions, are automatically remembered each time you restart Album Express. The program stores layout information in an ".ini" file or the Windows registry (depending on your choice in [Options-2](#)). If you want those settings to be ignored, including all options, just hold down the Shift key while Album Express is being launched. It will then be configured as if you are running the program for the first time. Note that all your options will be reset.

Menu Bar

Provides access to all the main program commands. When a command is not available for the current context, it appears grayed out so it cannot be activated. Keyboard shortcuts are indicated next to the menu item, when these are available. Selecting a menu command usually displays a brief explanation about it in the Hint line.

Tab Bar

Use the tab bar to change pages (or screens). You can click on the tab to open the corresponding page, or press the Ctrl+Tab keys to open the next page, and Shift+Ctrl+Tab to open the previous one. The tabs numbered from 1 to 4 are related to album-creation tasks. [Tab #5](#) shows a list of your album creations, which you can view at any time through your browser by clicking on the "Show Album" button. The next tab is labeled [Options-1](#) or [Options-2](#). As the name indicates, these are the pages that contain the program's options. The last tab, [Template Editor](#), is usually not visible. It is only displayed when you edit or create a new template through the integrated editor. See the topic Program Tabs for more details on the different pages.

Status Bar

Album Express uses the status bar to display useful program information. It displays the program's Hint text, which informs you about the program object under the mouse cursor.

2.2 Program Tabs

2.2.1 1. Main Settings

The tab with the main settings is the first page displayed when you start Album Express. If you are on another page, click on the tab labeled "1. Main Settings" to open it. You can move from one field to the next on a page by pressing the tab key, or by clicking on the field with the mouse. Depending on the settings and the type of template used, some fields may be disabled. This means that their content cannot be changed under the current context.

The Main Settings page contains all the basic settings you need to create an album. First you define the type of pictures you want to use in your album by defining a value for the "**Picture filters**" field. For example, if you only want to display GIF images (CompuServe Graphics Interchange), enter `"*.gif"` (without the quotes) in the field. The asterisk character is a wildcard character; see the topic [File Filters Wildcards](#) for more information. Or if you want to include only JPEG type images, enter `"*.jpg;*.jpeg;*.jpe"` (notice that multiple criteria are separated with a semi-colon). If you apply the following filter `"tn_*.jpg"` on the Samples folder, then only the thumbnail pictures will be displayed. Almost all browsers can display image files of the following types: GIF, JPEG, and PNG (Portable Network Graphics). Only MS-Internet Explorer will display BMP (Windows Bitmap) files. You can also specify Web-page file types (`*.htm;*.html;*.asp;*.css`) if you want to create an index page with links to them. To exclude a subset of files from the grid, use the "**Exclusion filters**" field. If you want to add several criteria in this field, use a semi-colon to separate each one. Example: `tn_*.*;zz_*.*`

The "**Choose picture folder**" field is like a miniature version of Windows Explorer integrated in the program. When you right click with the mouse in that field, you will see the same shortcut menu as in Windows Explorer. Beware that this field will let you rename and move folders just as in Explorer. Use this field to select the folder that contains the pictures you want to use for your album. When you click on [tab #2](#), you will see all the files in the selected folder that match the current picture filter. If your chosen folder also contains subfolders, you can set the "**Include subfolders**" checkbox to include all their matching content. If you have pictures in many different locations on your hard disk, you can quickly select previously used folders by using the "**Reuse folder**" field.

Note that this "picture folder" field is disabled if the "Pick images manually" checkbox is set, since choosing images manually uses a different selection method.

Use the "**Use template**" field to choose the template that will control the appearance of your album. Some templates may contain information about their purpose or usage instructions. To access this information, first select the template, then right click on the field with your mouse to open the shortcut menu, and select the "Information" command. If the command is not enabled, then there is no special information provided by the template. There is currently not a large selection of templates provided with Album Express, but we plan to set up a repository of templates and other resources at the program's Web site (www.fookes.com). See the topic [Sample Templates](#) for information about the

templates provided with Album Express.

Note that you can [edit](#) the selected template by clicking on the Edit button right next to the field. Leave the field blank and click on the button to create a new template.

If you want to create an album from pictures that are stored in various locations on your hard disk, you can set the "**Pick images manually**" option to add them to the grid individually. With this setting, you can fill the grid with pictures from any location on your computer. When set, the "picture folder" field is disabled and the picture grid is cleared of its contents. The second tab is automatically activated and the Add Images dialog box is opened. Choose the first folder that contains picture you want to use, select them in the dialog box, and then click on the OK button to add them in the grid. To add more pictures from another folder, just click on the Add button below the grid.

Once you have made these initial settings, you can already build a basic album by clicking on the "**Quick Build**" button. Of course, the more information you provide by going through the next pages, the more complete your album will be.

Note that you can easily save your settings or reuse previous settings by using the File|Save and File|Open menu commands.

2.2.2 2. List of Pictures

Click on the tab labeled "2. List of Pictures" to open this page. Depending on the type of template used, some commands and fields may be disabled. This means that their content cannot be changed under the current context.

The main component of this page is the file grid, which displays all the items contained in the selected folder that match the current Picture Filters (see [tab #1](#)). You can drag the column header separators with the mouse to resize columns. Clicking on the header caption sorts the data in the column; if the column is already sorted, then it is reversed. An Up or Down arrow symbol is displayed next to the column caption, and indicates whether the data is sorted in ascending or descending order respectively. Depending on the size of the program window, all columns might not fit within the view; in this case, you can use the horizontal scroll bar to display the rightmost columns. You can resize-to-fit columns by double-clicking on the column separator in the grid header. You can configure the aspect of the grid through its shortcut menu (font, background color, grid lines). Other commands in the shortcut menu let you control the row selection, copy the grid's content to the Clipboard, or preview the grid item currently selected (either through the integrated [image preview window](#), or the Windows Quick View utility, or an application associated with the file type).

You can select rows with the arrow keys or the mouse. As with Windows Explorer, use the Shift key to select a range of files in the grid, and the Ctrl key to select non-adjacent items.

To remove pictures from the album, just select them and click on the **Exclude** button. Unless you have set the option "Pick images manually" (see [tab #1](#)), you can re-integrate excluded pictures (they show a strikeout effect) by first selecting them and then clicking on the **Include** button. When you are selecting pictures manually, the Include button is replaced with an **Add** button; use this button to open the "Add Images" dialog box and select the pictures to include in your album.

If you wish to sort the grid's content in a sequence that cannot be specified by sorting one of the columns, you must first set the "**Sort by**" field to "Custom" (without quotes). You can then select one or more rows and use the **Up** and **Down** buttons to move them around.

You can add or edit a description to any picture in the grid. Just select the picture and then enter the field "**Edit description**", which will automatically expand to a larger size. You can enter up to a maximum of about 40,000 characters for each image description. The text may contain HTML tags and links. When you press the Enter key, your changes are automatically saved and the next row is selected, ready to have its description edited. To move and edit the previous description, press

Shift+Enter. You can also use Ctrl+Up and Ctrl+Down to navigate up and down through the picture list. Use the Ctrl+Enter key to insert line breaks in your description. All these descriptions are stored in the file `Settings\Albums.ids`. Album Express takes care of saving them on disk when necessary. The next time you reopen the pictures in the grid, you will see your descriptions next to the corresponding picture and these will be available to any album you build based on these pictures.

Tip: if you have set the option "Pick images manually", you can drag-and-drop files from Windows Explorer to the grid.

2.2.3 3. Page Details

Click on the tab labeled "3. Page Details" to open this page. Depending on the type of template used, some buttons and fields may be disabled. This means that their content cannot be changed under the current context.

The following fields are used by [templates](#) to build the albums and define the contents and appearance of each page. Note that some templates may ignore certain fields, or use them only under certain circumstances.

Album file name

If the chosen template allows it, you can type a name for your main album file in the "Album file name" field. If you leave out the extension part of the name, Album Express will use the same extension as the template file or the default extension defined on the [Options-2](#) page. If this field is left blank, Album Express will use the default name "Album.htm" for it.

Max. pics

Use this field to determine how many pictures you want to display on each row or page (depends on the chosen template) of your album. When the value is used for pictures per page, leave the field blank or set it to zero to put all your pictures on a single page. Note that some templates may disable this choice.

Charset

Use this field to define the character set needed to correctly render the text contained in your album. You can either pick a value from the drop-down list or type a valid character set name. It's fine to set this field to [Omit] if your picture descriptions are all in English. If you choose a special character set, you might have to uncheck the "Use HTML entities" box on the [Options-2](#) page to render text correctly in your browser.

Background image

The list displays all the available background images. These are stored in the Backgrounds folder and can be used as a background pattern for your album pages. You can add new background images from other locations to this folder by clicking on the "..." button next to the field. You can rename or delete background files, or refresh the list, by using the field's shortcut menu. Click on the little preview button to see how the background picture is rendered in your browser.

Colors

Four buttons are provided to control the colors of various parts of your album pages. The Background color is used for the whole page, though it may not be visible if you choose a background image that fills the page. Text color is used as the default color for normal text. Link is the default color used for links that have not yet been visited, and VLink is the default color for visited links.

Page title

Most templates use this field as the title displayed in the title bar of the browser. It might also be displayed at the top of each page. Note that most templates will ignore this field if you leave it blank.

Description

Most templates use this field in the <HEAD> section of the album page or in visible areas of the page.

Note that most templates will ignore this field if you leave it blank.

Keywords

Most templates use this field in the <HEAD> section of the album page. It is only useful if you plan to publish your album on the Web, so that search engines can index it based on the keywords you define. Note that most templates will ignore this field if you leave it blank.

Base URL

Most templates use this field in the <BASE> element under the <HEAD> section of the album page. It is only useful if you plan to publish your album on the Web. The value of this field defines the base for all relative URLs within the album. Note that most templates will ignore this field if you leave it blank or if it contains the value [Local].

2.2.4 4. Make Album

Click on the tab labeled "4. Make Album" to open this page.

This page is divided into two sides. The left side contains commands related to making the album and uploading it, and the right side contains the progress window, which details each step of album building and FTP uploading.

Album folder

This field lets you choose where the album will be saved when you execute the "Build Album" command. If you leave it blank, the album will be saved under the Albums folder. If both this field and the Album name field on [tab #3](#) is left blank, then Album Express will automatically create a new numbered folder under the Albums folder. You can enter folder names that don't exist yet, since the build command takes care of creating new folders automatically. If you enter a relative folder name, like "Summer\2007", it will be stored under the Albums folder. Specify a full path, like "c:\Temp\Test" if you don't want to store your album under the Albums folder.

Build Album

Click on this button to build your album. Note that any previous album file stored in the same location and that shares the same name will be overwritten without any warning. Once you have successfully built your album, you can open it in your browser by clicking on the "Preview Album" button. You will also find the new album listed in the Albums list on [tab #5](#). If you are not satisfied with the new album, just click on the "Delete Local Album" to delete the related album files and remove it from the Albums list. You can then make adjustments to your settings and click again on the "Build Album" button to rebuild a new version of your album. You can continue this process until you are satisfied with the appearance of your album.

Preview Album

Use this command to show the most recently built album in your browser.

Calculate Album Size

This command is useful if you intend to upload your album to a remote server. It will calculate the approximate space you will need on your server to store the whole album with all its pictures and any other media used in its pages.

Upload Album

Use this command when you are ready to upload your album to a remote server. It will display a panel with a new set of fields used for the upload process. Although Album Express includes a simple FTP client for uploading album files to FTP servers, it may not be compatible with all systems. Also, it currently doesn't have the capability to cross firewalls. As a result, this command offers two ways of uploading your album. Either through the integrated FTP tool, or by specifying a local directory instead of a remote server address. With the second option, Album Express will copy all the album files to your local directory and adjust the links in the album pages; you will then be able to use a full-featured FTP

client to upload your album files. See the topic [Upload Album](#) for more information.

View Remote Album

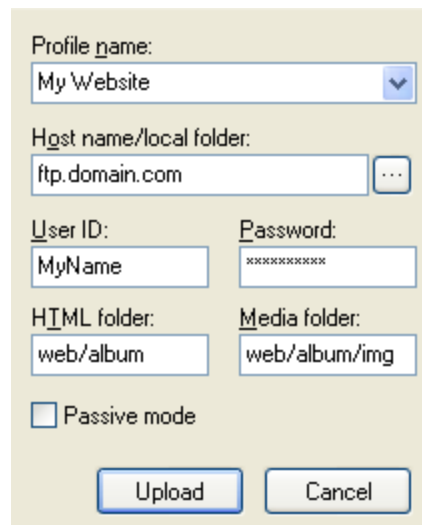
Use this command to open your freshly uploaded album on the remote in your browser. Note that the default URL determined by Album Express based on your server address may not work, so you might have to edit it to match your Web address.

Delete Local Album

Use this command if you don't want to keep a local copy of your album, or if you want to replace it with a newer version. Choosing this command will automatically remove the album from the Albums list on [tab #5](#).

2.2.5 Upload Album (tab 4)

The Upload Album panel is displayed after you click on the "Upload Album" button on [tab #4](#). It gives you access to all the necessary fields used for uploading your album to a remote server.



Profile name field

If you often upload your albums to different servers or locations, you can set up different profiles for each location. Just enter a new name in the "Profile name field" to start a new profile. It is automatically saved when you click on the Upload button, or you can save it by opening the field's shortcut menu and choosing the Save command. To reuse an existing profile, just select the name from the list.

Host name/local folder

You have two choices with this field. If you enter an IP number or a host name, for example "123.456.789" or "ftp.domain.com", Album Express will use the internal FTP tool to upload your album files to the remote server. However, if you specify a local folder on your computer, Album Express will copy all the album files (including images and other media) under that folder, using the subdirectories specified in the fields HTML and Media folder. Links in the album pages are automatically adjusted to fit within the defined context. You can then eventually use a full-featured FTP client to upload your album files from the local directory.

When specifying a host name, you can also add a slash followed by a folder name, which is relative to the default login folder. Example. Supposing the default login folder on the remote host is "[/usr/home/rek](#)". The following settings

Host name

ftp.domain.com/public_html

HTML folder

album

Media folder

album/images

would send the HTML files to the `"/usr/home/rek/public_html/album"` folder on the remote server, and the image and other media files to the `"/usr/home/rek/public_html/album/images"` folder. If you don't add the folder name to the host name, then you would enter the following values to achieve the same result:

Host name

ftp.domain.com

HTML folder

public_html/album

Media folder

public_html/album/images

User ID

If you are uploading your files to a remote server, use this field to enter your User ID for connecting to it. This field is disabled if you have specified a local folder in the field "Host name/local folder".

Password

If you are uploading your files to a remote server, use this field to enter your password for connecting to it. This field is disabled if you have specified a local folder in the field "Host name/local folder". You can choose to have Album Express remember your password if you set the option "Remember FTP passwords" on the [Options-1](#) page. Saved passwords are encrypted so that no prying eye can read them.

HTML folder

Use this field to specify a subfolder for your HTML files (the album pages). Leave it blank to store the files in the default directory of your remote server, or in the local directory specified in the field "Host name/local folder". Folders that don't exist are automatically created before files are uploaded. Do not create folder names with blank spaces or special characters. If you put a slash in front of the folder name, Album Express interprets it as a top level folder. If the folder name does not begin with a slash, then it is treated relative to the default folder opened once you connect to a remote host.

Example. Supposing the default host folder is `"/usr/home/rek"` when you log in, and you want your album files stored under `"/usr/home/rek/public_html/album"`. You can enter either of the following values in the HTML folder field: the relative name `"public_html/album"` or the fully qualified name `"/usr/home/rek/public_html/album"`. Entering `"/public_html/album"` (with a slash at the start) will not work because Album Express will bypass the default `"/usr/home/rek"` folder and search for the `"public_html"` folder at the root directory.

Media folder

Use this field to specify a subfolder for your media files (pictures, page graphics, sound files, etc.). This field is useful if you prefer to separate your media files from your HTML pages. Leave it blank to store the files in the default directory of your remote server, or in the local directory specified in the field "Host name/local folder". Folders that don't exist are automatically created before files are uploaded. Do not create folder names with blank spaces or special characters. If you put a slash in front of the folder name, Album Express interprets it as a top level folder. If the folder name does not begin with a slash, then it is treated relative to the default folder opened once you connect to a remote host. See the example above, under HTML folder.

Passive Mode

Set the Passive Mode option to allow FTP access through firewalls.

Upload

Click on the upload button to send your album files to your remote server, or copy them to your local folder. If the upload to the remote server fails or has been aborted, Album Express will create a log file that can be used to resume the upload later. Log files use the extension ".ftp" and have the same path and file name as their corresponding album. You can open these log files and resume the upload by using the menu command File|Resume Upload.

Information exchanged between Album Express and the remote server is displayed in the Progress window.

2.2.6 5. Albums List

Click on the tab labeled "5. Albums List" to open this page.

This page gives you access to all the albums you have created and chosen to keep. The list is automatically updated by Album Express when you use the "Build Album" or "Quick Build" commands. To display an album in your browser, first select it in the list and then click on the "Show Album" button. Use the Add button to add new files from your disk to the list. Use the Remove button to remove the selected album from the list. Use the list's shortcut menu to access commands to clear the whole list, or edit the title of the currently selected album.

Tip: you can use Windows Explorer to drag-and-drop Web files onto the grid to add items to the list.

2.2.7 Options-1

Click on the tab labeled "Options-1" to open this page. The More button at the bottom of the screen gives access to the "[Options-2](#)" page. If you are on the "Options-2" page, click on the Back button to return to "Options-1".

Options are useful to configure certain aspects of the program and control its behavior. This first Options screen is divided into two sections. The first section contains fields that can be used by album templates (note that some templates may not use them).

Template fields

All the fields in this section are optional. If they are left blank, most templates designed to use them will ignore them. Most of these fields are only useful if you intend to upload your album to a Web site.

The Author field is intended for the name of the album creator, or the owner of the pictures. Use the E-mail field for the author's contact address, and Homepage for the main entrance page to the author's Web site.

The Date format field can be used to control the appearance of dates when they are used in an album. When you place the mouse arrow over this field, a tooltip will pop up to show you what the format looks like with the current date. See the topic [Date and Time Filters](#) for information on the codes you can use in this field.

Use the "Copyright message" field if you want to display copyright information in your album pages. For example: All photographs © 2008 - Fookes Software

Other Options**Restore program layout**

Set this option to make Album Express remember its last position and size, as well as the column

widths in the grids. Uncheck this option if you want the program window to be restored to its default size and position each time you restart the program.

Show information panel

Set this option to make the information panel above the tab bar visible. Uncheck it to hide the panel.

Prompt to save settings

Set this option if you want Album Express to prompt you to save modified album settings before you open new settings or close the program.

Remember FTP passwords

Set this option if you want Album Express to remember your FTP password when you reopen the program. Note that passwords are stored in the program's ini file (or the Windows registry) in an encrypted format to make them unreadable to prying eyes.

Preview in browser

Leave this field blank if you want to use your default browser (it must be associated with HTML-type files to work properly), or enter the full program name of the browser you want to use to view your albums. Click on the "..." button next to the field to browse through your disk for the program file. See the topic [Understanding Browsers.dat](#) for information about controlling the way a browser is opened.

Use lowercase URLs

This option is only useful if you want to upload your album to a remote server. Set this option to force all links inserted in album files to lowercase. The FTP tool in Album Express will also convert all file names it uploads to lowercase.

Use relative paths

This option only applies to local albums. When set, links to local files are converted to relative path names. Uncheck this option to use full file names.

More

Click on this button to display the second Options page ([Options-2](#)).

2.2.8 Options-2

To open the "Options-2" page, first click on the tab labeled "[Options-1](#)", then on the More button at the bottom of that screen.

Use image name when no description

Set this option if you want templates to substitute an image's blank description (see Description column in grid on [tab #2](#)) with its file name.

Use Web-page title when no description

Set this option if you want the image grid to automatically substitute an HTML-file's blank description (see Description column in grid on [tab #2](#)) with its Web-page title.

Save descriptions with images

Album Express will save picture descriptions in the same folder as the corresponding image files when this option is set. The "local" descriptions are saved in a format that is compatible with those created by the popular ACSee32 image-viewing program. As a result, image descriptions can be shared between both programs. Uncheck this option if you want to keep all your image descriptions centralized in a single file, Albums.ids, stored in the Settings subfolder.

Also number first album page

Check this option to insert an index number in the file name of the first album page. Note that this option is ignored if only one page is generated. Example using the name "index.html":

option checked:

[index01.html](#), [index02.html](#), [index03.html](#), ...

option unchecked:

[index.html](#), [index02.html](#), [index03.html](#), ...

Use HTML entities

Check this option to have special characters converted to HTML entities. Example: © -> ©.

Uncheck this option to leave special characters unchanged. You should only uncheck this option if you are using special character sets in your album (using the "Charset" field on [tab #3](#)).

Browser after Quick Build

Set this option if you want newly built albums to automatically display in your browser after using the Quick Build command.

Upload new media files only

Set this option if you want the FTP tool to only upload media files (album pictures, page graphics, and other media used in the display) that do not exist on the remote server. If you uncheck this option, all album files are uploaded to the remote server, even if they already exist there.

Process images

Check this option to let Album Express automatically convert your images to JPG and shrink them if they exceed the size defined in the Max. image width/height fields. Image conversion occurs during the building of album files. Note that images are only overwritten if the "Overwrite images" option is set.

Overwrite images

Check this option to allow Album Express to overwrite images when the "Process images" and/or "Copy images" options are active. Uncheck this option to avoid potentially overwriting your original pictures.

Copy images to specified folder

Check this option to copy original and/or processed images to the folder specified in the "Save images in" field when you build your albums. Note that images are only overwritten if the "Overwrite images" option is set.

Max. image width

Use this option to "shrink" all images, in the browser display, with a width exceeding the set value. Leave blank or set to zero to make Album Express ignore this field. For more information, see the corresponding topic under [Frequently Asked Questions](#).

Max. image height

Use this option to "shrink" all images, in the browser display, with a height exceeding the set value. Leave blank or set to zero to make Album Express ignore this field. For more information, see the corresponding topic under [Frequently Asked Questions](#).

Save images in

This field is used when the "Copy images to specified folder" option is set. Album Express will copy original and/or processed images to the specified folder. The folder can be either a fully qualified location or relative to the location of the generated album files. Leave it blank to save the images in the same folder as the album pages. If the folder does not exist, Album Express will try to create it before saving files in it.

Default extension

When the standard HTML extension is used, define whether your album files should use .htm or .html. Either extension type works fine with all browsers. The difference is only "cosmetic".

Default template editor

Leave this field blank to use the internal [template editor](#). If you prefer to use another editor, you can

enter the full program name in this field. Click on the "..." button next to the field to browse your hard disk.

Back

Click on this button to return to the [Options-1](#) page.






2.2.9 Template Editor

You can open the integrated template editor by clicking on the Edit button right next to the "Use template" field on [tab #1](#). Note that this will not work if you have defined an alternative editor on the [Options-2](#) page.

The template editor offers a wide range of commands that you can access by opening its shortcut menu. You can configure the syntax highlighting by clicking on the "More Options" menu command.

2.2.10 News

The News feature is available on the rightmost tab in the tab bar. Use this feature to check the Internet for news and software updates from Fookes Software. News items are organized by category. A single mouse click on a news item will display the corresponding Web page in your browser or starts a file download. Icons are displayed next to news items and have the following meaning:

-  The news item has either been added today or after you last displayed news.
-  The news item has already been displayed before.
-  The news item link points to an .exe Setup file.
-  The news item link points to a .zip file.
-  The news item is an e-mail address link.

The News feature is useful to find out if a new Album Express update is available. It also displays news about our other major releases and occasionally special offers that we make available to our users. Information is transmitted one way only, from our server to your computer. The news feature does not send any details about your system to us. Album Express determines locally what relevant news to display to you.

Usually, program updates are downloaded and installed directly from within Album Express — updating your software this way couldn't be easier. However, be aware that some download managers may take over this download process and interfere with normal operations. When this happens, you may see a prompt from Album Express asking you to tell it when the download has been completed.

You can configure Album Express to check for news at regular intervals by checking the **Check for news every 15 days** option on the News tab. The News tab will automatically become active if new news items have been added since the last viewing. If the **Update** button is available, you can use it to update news manually by clicking on it. This button is only displayed when the **Check for news every 15 days** option is unchecked.

2.3 Program Menu

2.3.1 File menu

New

Creates a new template if the integrated template editor is open and active. Otherwise, resets the album settings. If you have an album-settings file called "Default.alb", then the settings contained in it will be automatically used.

Open

Opens a new template if the integrated template editor is open and active. Otherwise, opens an existing album-settings file. Do not confuse "album settings" with the "album files" that you display in your browser. Album settings are saved in files that contain information you used to create your album (i.e. album name, folder name, template, pictures to use, background image and colors, page title, etc.)

Save

Saves the current template text if the integrated template editor is open and active. Otherwise, saves your current settings to an album-settings file. Do not confuse "album settings" with the "album files" that you display in your browser. Album settings are saved in files that contain information you used to create your album (i.e. album name, folder name, template, pictures to use, background image and colors, page title, etc.)

Save As

Similar to the Save command, but lets you save the template or album settings under a different name in a new file.

Thumbnails

Opens the [Thumbnail Generator](#) dialog, which you can use to create thumbnails and scaled-down copies of your pictures.

Quick Build

Immediately builds your album based on the current settings. If you have enabled the option "Automatic preview after Quick Build", your new album will be displayed in your browser as soon as it has successfully completed the building stage.

Resume Upload

If you have made a previous attempt to [upload](#) your album to a remote server, and the process was aborted or canceled, you can re-initiate the upload by using the FTP log file created by Album Express. Log files use the extension ".ftp" and have the same path and file name as their corresponding album.

Exit

Quits the application; prompts you to save modified documents.

2.3.2 Edit menu

Undo

Reverses the last edit action.

Cut

Cuts the selected text to the Clipboard.

Copy

Copies the grid or text selection and puts it on the Clipboard.

Paste

Pastes text from the Clipboard to the active input control.

Select All

Selects all the text in the active input control.

Options

Activates the Options tab. See the [Options tab](#) for information about settings.

2.3.3 Help menu

Help Topics

Opens the Help Topics window.

Search for Help On

Searches for a help topic.

Ordering Information

Displays the Help file topic covering [ordering information](#).

Visit Homepage

Visit Album Express' Homepage on the Web.

Open Order Page

View Album Express' [Order page](#) on the Web.

About

Displays the "About" dialog box.

2.4 Templates

2.4.1 Sample Templates

Several templates are included in the Album Express package. Some of them are provided for demonstration purposes so that you can [develop your own](#) templates from them, if you wish to do so. You will find a repository for templates and other related resources by visiting the program's Web site at:

<http://www.fookes.com/album/>

There are also links to albums created with the templates described below. You can also create these demo albums on your own computer by using the provided album settings. Just use the File|Open menu command to open a file, and then click on the Quick Build button to create the album.

Default.html

This template creates a page with thumbnails that are each linked to a page with the corresponding full-sized picture. By default, the pages use a dark gray background and the full-size pictures have a white frame around them. You can navigate between the pictures by using the thumbnails page or move sequentially through the full-size pictures by clicking on them. Use the "Demo Default.alb" settings (choose through the File|Open menu command) and then click on the Quick Build button to see what it looks like in your browser.

Demo-MIDI.html

This template is provided as a demonstration of what needs to be done to create frames with thumbnail pictures and music. Many fields are not available when you use this template. It is designed to work only with the samples pictures installed by Album Express. You can, of course, edit the template so that it will apply to your own files.

Frames.html

This template is designed to display thumbnails in the left column and the selected picture in the main screen area. The thumbnails are automatically created if they don't already exist.

Indexed Images.html

Creates an index page with a link to each album page. In this case, album pages can only have one

picture on each page, and the name of the page's file reflects the name of the image it contains. For example, if the image is called Switzerland.jpg, its page will be called Switzerland.htm. The navigation bar uses graphics displaying a previous, next, and index icon.

Indexed Pages.html

Similar to the Default.htm template, but adds an index with a link to each album page.

Photo Page.html

This template is similar to the Default.html template but draws a 3D frame around each picture.

Search.html

Use this template to create pages that integrate search buttons to navigate to other pages. Note that the Javascript used in this template might not work with older browsers.

SlideShow.html

Here's a template that will produce pages that produce a slide show effect. When you build albums based on this template, you are prompted to define the delay in seconds between each page. Use this template to create albums stored on your computer. If you want to upload a slide show to the Web, you should use the WebSlides.htm template instead.

WebSlides.html

This template is similar to SlideShow.htm, but instead of measuring the delay from the moment the page is sent to the browser, it measures the delay only once the active picture has been fully loaded. This is important for Web slide shows as pictures can sometimes take quite long to load fully.

Basic.html

Basic template that makes use of all the available fields provided by Album Express. It displays a text-navigation bar when the album contains more than one page. You can change the background, text, and link colors, and choose a background for your images. The template produces a margin on both side of the page's contents, so that background images can use this space effectively.

2.4.2 Creating Templates

IMPORTANT: Please note that Fookes Software does not provide any support for custom templates. If you choose to create or modify a template, you accept that you will receive no help from Fookes Software's customer support service.

The templates provided with Album Express can be modified, or you can add your own to the program. They offer some powerful features to control how albums are created and their appearance. Creating templates is not as easy as using the program. However, if you take time to read through the following instructions and look at the sample templates, you will soon be able to author your own. You can also get valuable help by joining the free [mailing list](#). For those of you who lack the time or skill to learn about these more advanced features, you will find ready-made templates made by other users. Fookes Software will be setting up a repository for templates and album images (backgrounds, template graphics, etc). The repository will be available from:

<http://www.fookes.com/album/>

Opening a Template

You can customize the [included templates](#), or create new ones within Album Express. To edit an existing template, select it from the "Use template" combobox on tab #1 and click on the Edit button (with the document icon) to open the editor. To create a new template, leave the "Use template" combobox field blank and click on the Edit button. Once you are in the editor, you can use its shortcut menu to insert field names, section delimiters, and album options in the text. New templates contain the basic page elements you need to get started. You can change the initial text used by new

templates by editing the file `Settings\Template.htm`. You can delete the `Template.htm` file if you want new templates to open up blank.

If you prefer, you can use an external editor instead of the [internal one](#) provided by Album Express. In the "Default template editor" field in [Options-2](#), just enter the full path name to the program you wish to use.

Template Structure

Normally, a template should be divided into three parts: 1) header; 2) body; 3 footer. Only the body section should contain fields representing the images you want to display. The text contained in the body section is repeated for each image that is encountered in the grid. The body section starts with the following tag: `<!--BODY_START-->`; the text preceding the tag represents the header section. The body section ends with the tag `<!--BODY_END-->`; all text following that tag represents the footer section.

You can also define a contents section, which can either be placed in the header or footer part of the template. The contents section is useful when you create albums with multiple pages. The text contained in the contents section is repeated for each page that is created for the album. This section starts with the following tag: `<!--CONTENTS_START-->` and ends with the tag `<!--CONTENTS_END-->`.

A template can also contain images and other media types. The easiest is to store these extra files in the same directory as the template. However, if you want to store these elsewhere on your hard disk, you will have to include the path name (full path or relative to the Templates folder) in the link so that Album Express can find them.

Overriding Path Names

When Album Express generates albums from templates, it automatically adjust the path of file names based on the current settings. There may be some situation when you will want to disable this behavior. You can do so by adding an asterisk right after the opening of the tag. Example: `<*IMG SRC= >`.

2.4.3 Album Options

Templates can also contain a special tag, which defines options settings. Any option defined in this tag will replace the value of its equivalent setting in Album Express. This tag may be placed anywhere in the template, and starts with "`<!--ALBUM-OPTIONS`" and ends with "`-->`" (without the quotes). Each option must be on its own line. It starts with the option name, followed by an equal sign and the value you want to assign to it. The complete tag can be inserted in a template by using the "Insert Album Options" command from the shortcut menu. Example of a tag containing all the available options:

```
<!--ALBUM-OPTIONS
OutputName=Holidays\TripToFrance
Folder=D:\Images\Holidays
IncludeSubFolders=No
Include=*.jpg
Exclude=bad_*.
Sort=File Name
PicsPerPage=3
IterateGrid=Yes
IsContentsPage=No
TemplateBuild=Contents.htm
```

Merge=VariableName
Variables=VariableName:Value

ThumbPrefix=tn_
ThumbMaxSize=150x150
ThumbSharpness=10
ThumbQuality=80
ThumbOverwrite=Yes/No

ImagePrefix=web_
ImageMaxSize=640x480
ImageSharpness=0
ImageQuality=80
ImageOverwrite=Yes/No

BackImage=EtchedBorder.gif
BackColor=#A0A0A0
TextColor=#FFFFFF
LinkColor=#FFFF00
VLinkColor=#FFFFE0

FTP_AutoConnect=No
FTP_Host=123.456.78.901
FTP_UserId=Lisa
FTP_Password=abc123
FTP_HtmlDir=album
FTP_ImageDir=album/images

IgnoreFields=PickManual,SubFolders,Folder,FileFilters,Exclude,Sort,PicsPerPage
Info=Copyright (C) 2002 Fookes Software
-->

Options can be placed in any order and character case for their names is not important (except for their assigned values, of course). You can leave out options you don't want to use.

This Options section allows the use of special fields to represent certain directories. These are:

- {TempPath} - Path for Windows temporary files
- {ProgramPath} - Path to the Album Express directory
- {SamplesPath} - Path to the Album Express Samples directory
- {AlbumPath} - Path to the Album Express Album directory

You can use these as a value for the OutputName and Folder keys.

OutputName

Defines the name of the album files created by the current template. If you don't specify a file extension, the same extension as the template file will be used. You can also specify a path name, but it will be ignored if the user entered a path name in the "Album folder" field on [tab #4](#). If no path name is used, then the resulting album files are saved in the Album folder. By default, an index number is added to the name of each page following the first one. Alternatively, if you display just one image per page, you can set the output name to reflect the image name (in this case, the PicsPerPage value is ignored as each page must have only a single picture). To enable this behavior, just set the OutputName value to {ImageName}; e.g.

OutputName={ImageName}

If the contents page is not the main template file, you can assign the special {AlbumName} field. The substituted value corresponds to the album file name specified by the user on [tab #3](#). You can see this field used in the "_Photo Thumbs.htm" template. Example:

OutputName={AlbumName}

Folder

Defines the folder that contains the images to process. If you want to specify the Samples directory, you can use the following syntax:

```
Folder={SamplesPath}
```

IncludeSubFolders

Can have a value of Yes or No. You can set this option to "Yes" to include all matching files within subfolders contained in the chosen folder. "No" means the content of subfolders will be ignored.

Include

Equivalent to the "Picture filters" field on [tab #1](#). Defines the range of pictures loaded in the grid. You can assign the special field {ThumbSpecs} to this item. It inserts a wildcard based on the value of the *ThumbPrefix* option. Example: if "tn_" is the value of *ThumbPrefix*, then the following code will return "tn_*. *":

```
Include={ThumbSpecs}
```

Exclude

Same effect as the Exclude button on [tab #2](#), but excludes all pictures that match the defined pattern. You can assign the special field {ThumbSpecs} to this item. It inserts a wildcard based on the value of the *ThumbPrefix* option. Example: if "tn_" is the value of *ThumbPrefix*, then the following code will return "tn_*. *":

```
Exclude={ThumbSpecs}
```

Sort

Defines the sequence order of the images. Accepted values correspond to those listed in the "Sort by" combobox on [tab #2](#).

PicsPerPage

Defines the maximum number of pictures to display per page. Equivalent to the "Max. pics/page" field on [tab #3](#).

IterateGrid

Can have a value of Yes or No. The default value is Yes, which means that pages are output based on the contents of the grid. You can set this option to "No" when you want to create a Contents page that does not contain references to the images contained in the grid.

IsContentsPage

Can have a value of Yes or No. The default value is No, which means that the first page created is the starting page. You can set this option to "Yes" to specify an alternative starting page (or Contents page). The *PicsPerPage* value is ignored when this option is set to Yes, as the contents page must represent a single page.

TemplateBuild

You can create extra album pages by defining which templates Album Express should process once it has completed the current template. This option accepts one or more template names. Use a semi-colon to delimit multiple names. Can be useful for creating a Contents page, or complex pages using frames. Note: Be careful not to create recursive instructions (i.e. a template that invokes another template, which invokes the first one) as the program would end up in a never ending loop of page building. Normally, templates that are invoked this way should not be available for selection by the user (in the "Use template" field on [tab #1](#)). You can hide such templates from the list by starting the name with an underscore character "_".

Merge

Use this option to send the generated pages to memory instead of disk files. Each page created this way is appended to the previous one and stored in the specified variable. Variable names should not contain spaces or special characters. The contents of variables created this way can be inserted into

other pages by using the special field {Merge:VariableName}. See the "Photo Page.htm" and "_Photo Thumbs.htm" templates for a demonstration of their usage. In the following example, the pages will be stored in the variable "RememberMe":

[Merge=RememberMe](#)

Variables

Use this option to define variables and assign values to them. Variable names should not contain spaces or special characters. Use a colon to separate the variable name from the value being assigned to it. If you define more than one variable, you must enclose each assignment in curly braces. The contents of variables created this way can be inserted into other pages by using the special field {Merge:VariableName}. Be careful to generate the pages in the appropriate order so that the variables contain the appropriate contents before you use them. See the "Photo Page.htm" template for a demonstration of its usage. Below are the two syntax forms you can use:

Variables=OnlyOneVariable:Value

Variables={VariableName1:Value1} {VariableName2:Value2} {VariableName3:Value3}

Info

The Info option is useful to provide information about the template for example a copyright notice or simple instructions). The user can display the information by clicking on the template name with the right mouse button and choosing the Information command. You can indicate line breaks with the `^P` token.

IgnoreFields

IgnoreFields is used to disable all the fields listed for this option. This helps the user identify fields that may not be changed in the current context. When you specify several field names with this option, you should use a comma to separate each value. The following field names are available for this option:

PickManual
SubFolders
Folder
FileFilters
Exclude
Sort
OutputName
BaseUrl
BackImage
BackColor
TextColor
LinkColor
VLinkColor
PageTitle
PageInfo
PageKeywords
PicsPerPage
Host
UserId
Password
HtmlDir
ImageDir

Thumbnail Options

You can tell Album Express to automatically make thumbnails while it is building an album. The following options are available:

ThumbPrefix specifies the prefix/suffix that should be added to the thumbnail file. The default prefix is

"tn_" (without the quotes) and is used if you don't specify this option. If the value starts with an underscore character, it will be used as a suffix to the file name.

ThumbMaxSize is used to specify the maximum dimensions in pixels of the thumbnail picture. Pictures that are larger than the specified values are shrunk to fit within the imposed dimensions. Use the x character to separate the width value (on the left side) from the height value (on the right side). If you specify a single value, it is used for both the image width and height. The default value is 150 pixels for both the width and height. For example, to specify a width of 150 pixels and a height of 300 pixels, you would use the following expression:

```
ThumbMaxSize=150x300
```

To specify a maximum width and height of 300 pixels, you can use either of the following expressions:

```
ThumbMaxSize=300
```

```
ThumbMaxSize=300x300
```

ThumbSharpness can be any value between -100 and +100. It is only used when the image is resized. A value greater than 0 sharpens the image, and a smaller value softens it. The default value is 0.

ThumbQuality can be a value between 1 and 100. It defines the quality and influences the file size of the thumbnail. The higher the value, the better the image quality and the larger the file size. The default value is 80.

ThumbOverwrite defines whether existing thumbnails are overwritten by Album Express during the building process. If the value is Yes, thumbnails are rebuilt for all files. If the value is No, only images that do not have a matching thumbnail will have a new thumbnail file created. The default value for this option depends on the usage of the other thumbnail options. If ThumbMaxSize, ThumbSharpness, or ThumbQuality, are specified, then the default is Yes. Otherwise the value is No.

The thumbnail is automatically created when Album Express encounters the {ThumbUrl} field in the active template; this field is equivalent to the {FileUrl} field. Use the {ThumbWidth} and {ThumbHeight} fields to determine the width and height respectively of the thumbnail image; these are equivalent to the {ImageWidth} and {ImageHeight} fields. Example:

```
<IMG SRC="{ThumbUrl}" WIDTH="{ThumbWidth}" HEIGHT="{ThumbHeight}">
```

Image Options

You can tell Album Express to automatically resize/convert images to JPG while it is building an album. The following options are available:

ImagePrefix specifies the prefix/suffix that should be added to the image file. The default is no prefix. If the value starts with an underscore character, it will be used as a suffix to the file name.

ImageMaxSize is used to specify the maximum dimensions in pixels of the image. Pictures that are larger than the specified values are shrunk to fit within the imposed dimensions. Use the x character to separate the width value (on the left side) from the height value (on the right side). If you specify a single value, it is used for both the image width and height. The default values are those defined by the user in Album Express. If possible, you should avoid overriding the users settings.

ImageSharpness can be any value between -100 and +100. It is only used when the image is resized. A value great than 0 sharpens the image, and a smaller value softens it. The default value is 0.

ImageQuality can be a value between 1 and 100. It defines the quality and influences the file size of the created JPG file. The higher the value, the better the image quality and the larger the file size. The default value is 80.

ImageOverwrite defines whether existing images are overwritten by Album Express during the

building process. The default value is that defined by the user in Album Express. If possible, you should avoid overriding this setting.

Default Options

Some templates look better when they are used with certain background images and/or element colors. Starting with Album Express 3.0, you can define default values for colors and background images for each main template (the one that gets displayed in the template field on the [Main Settings](#) page). The values are set each time the user picks a new template from the list. Colors should be entered as hexadecimal values like those used in Web pages. Example:

```
BackImage=EtchedBorder.gif
BackColor=#a0a0a0
TextColor=#ffffff
LinkColor=#ffff00
VLinkColor=#ffffe0
```

2.4.4 Template Fields

IMPORTANT: Please note that Fookes Software does not provide any support for custom templates. If you choose to create or modify a template, you accept that you will receive no help from Fookes Software's customer support service.

Template fields are defined by placing the field name between curly braces; e.g. `{ImageName}`. Character case for the field name is not important, so `{ImageName}` is identical to `{IMAGENAME}`. Fields can be defined as permanent or conditional. If a field is conditional, it is only used if it contains data during the creation of the album pages. If such a field does not contain data, then the entire line is removed from the output. To make a field conditional, just use an underscore character in front of its name; e.g. `{_ImageName}`.

Note that if you want to add links to files that are created by Album Express, you must place the file name within the special field `{Link:FileName}`. For example, to insert a link to an index page, you would write `Index`. If you neglect to use this special field, Album Express will assume that the file being linked to has a path relative to the Templates folder.

The easiest way to insert fields in a template is by using the editor's shortcut menu. The submenu "Insert Data Field" lists all the available permanent-type fields, "Insert Conditional Field" lists all the available conditional-type fields, and "Insert Section Delimiter" lists all the available section tags.

The list below describes each of the available fields, and the sections under which they can be used:

{FileUrl}

Image url, which includes the path, name, and extension of the image file. The path is relative if the corresponding option is enabled. Use in Body section only.

{FileName}

Image file name, which includes the name and extension of the image file, but not the path. Use in Body section only.

{FileNoExt}

Image file name, without the path and extension. This field is similar to `{ImageName}`, but unlike it, `{FileNoExt}` is always lower case if the corresponding option is set. Use in Body section only.

{BaseUrl}

Base URL is normally only used in the `<BASE HREF="{BaseUrl}">` tag in the header section.

{CharSet}

Use this field to insert the character set required to correctly render the text contained in the Web album. This field should be used in the Header section of the Web page. Typically, it is used in the following Meta tag:

```
<meta http-equiv="Content-Type" content="text/html; charset={_CharSet}">
```

{BackImage}

Background image url, which includes the path, name, and extension of the image file. The path is relative if the corresponding option is enabled. Normally only used in Header section in the `<BODY BACKGROUND="{_BackImage}">` tag, but can be used in any part of the template.

{BackColor}

Hexadecimal code used to define the page background color. Normally only used in Header section in the `<BODY BGCOLOR="#{BackColor}">` tag, but may be used in any part of the template.

{TextColor}

Hexadecimal code used to define the default text color. Normally only used in Header section in the `<BODY TEXT="#{TextColor}">` tag, but may be used in any part of the template.

{LinkColor}

Hexadecimal code used to define the default link color. Normally only used in Header section in the `<BODY LINK="#{LinkColor}">` tag, but may be used in any part of the template.

{VLinkColor}

Hexadecimal code used to define the default visited-link color. Normally only used in Header section in the `<BODY VLINK="#{VLinkColor}">` tag, but may be used in any part of the template.

{PageName}

The value returned by this field depends on the section in which it is used. When used in the Contents section, it returns the file name, based on the current index, of the output files generated by the main template file (the one selected by the user in Album Express). When used in other parts of the template, the field returns the file name of the currently generated page. Note that the page name does not include the file path. Can be used in any part of the template.

{PageContents}

Use this field to insert the file name of the contents page (the first page of the album). It is especially useful to create a link for a "Home" or "Index" button. Can be used in any part of the template, but is normally not used in the Contents section.

{PageNext}

Inserts the file name of the next generated page. The field is blank if there is no next page. Useful to create links to sequentially related pages (e.g. navigation bar). Can be used in any part of the template, but normally not used in the Contents section.

{PagePrev}

Inserts the file name of the previous generated page. The field is blank if there is no previous page. Useful to create links to sequentially related pages (e.g. navigation bar). Can be used in any part of the template, but normally not used in the Contents section.

{PageFirst}

Inserts the file name of the first generated page. Useful to create links to sequentially related pages (e.g. navigation bar). Can be used in any part of the template.

{PageLast}

Inserts the file name of the last generated page. Useful to create links to sequentially related pages (e.g. navigation bar). Can be used in any part of the template, but normally not used in the Contents

section.

{PageIndex}

Inserts the page index number (i.e. position in sequence). Can be used in any part of the template.

{PageCount}

Inserts the total number of pages created for the current album. Can be used in any part of the template.

{PageTitle}

Inserts the text entered by the user in the "Page title" field on [tab #3](#). Normally only used in Header section between the <TITLE>{PageTitle}</TITLE> tags, but can be used in any part of the template.

{PageInfo}

Inserts the text entered by the user in the "Description" field on [tab #3](#). Can be used in any part of the template, but is often used in Header section in the <META name="description" content="{PageInfo}"> tag.

{PageKeywords}

Inserts the text entered by the user in the "Keywords" field on [tab #3](#). Can be used in any part of the template, but is usually used in Header section in the <META name="keywords" content="{PageKeywords}"> tag.

{ImageFolder}

Inserts the path to the image folder. The path is relative if the corresponding option is enabled. Can be used in any part of the template.

{ImageName}

Inserts the name of the current image, taken from the file name column in the grid. Should only be used in the body or contents section.

{ImageIndex}

Inserts the image index number (i.e. position in the grid). Should only be used in the body section.

{ImageCount}

Inserts the total number of images used in the album. Should only be used in the body section.

{ImageDate}

Inserts the file date of the image currently being processed. Should only be used in the body or contents section.

{ImageSize}

Inserts the file size in bytes of the image currently being processed. Should only be used in the body or contents section.

{ImageKbSize}

Inserts the file size in kilobytes of the image currently being processed. Should only be used in the body or contents section.

{ImageWidth}

Inserts the width in pixels of the image currently being processed. Should only be used in the body or contents section.

{ImageHeight}

Inserts the height in pixels of the image currently being processed. Should only be used in the body or contents section.

{ImageTagWidth}

Similar to {ImageWidth}. However, if the user has defined a maximum image width/height values (see [Options-2](#)), the width inserted by this field will be corrected for all images exceeding those values. Album Express reduces the image proportionally so that it fits within the size constraints set by the user. This field is normally only useful in the IMG tag:

```
<IMG SRC="{ImageUrl}" WIDTH="{ImageTagWidth}" HEIGHT="{ImageTagHeight}">
```

{ImageTagHeight}

Similar to {ImageHeight}. However, if the user has defined a maximum image width/height values (see [Options-2](#)), the width inserted by this field will be corrected for all images exceeding those values. Album Express reduces the image proportionally so that it fits within the size constraints set by the user. This field is normally only useful in the IMG tag:

```
<IMG SRC="{ImageUrl}" WIDTH="{ImageTagWidth}" HEIGHT="{ImageTagHeight}">
```

{ThumbDefHeight}

Inserts the maximum height in pixels defined for the creation of thumbnails. This field is useful to define frames of a fixed size for all thumbnails or to control layout on a page. Can be used in any part of the template.

{ThumbDefWidth}

Inserts the maximum width in pixels defined for the creation of thumbnails. This field is useful to define frames of a fixed size for all thumbnails or to control layout on a page. Can be used in any part of the template.

{ItemInfo}

Inserts the description text assigned to the grid item (image, html page, or other media) currently being processed (i.e. Description column in grid). Should only be used in the body or contents section.

{ImageTitle}

Inserts the short caption assigned to the image currently being processed (i.e. Description column in grid). The text is taken from the beginning of the {ItemInfo} field up to the delimiter formed by two consecutive colons (::); if no delimiter is found, the caption is empty. Should only be used in the body or contents section. Example:

```
{ItemInfo} = Geneva Sunset::Summer sunset over the city of Geneva
```

```
{ItemImage} = Geneva Sunset
```

```
{ImageCaption} = Summer sunset over the city of Geneva
```

{ImageInfo}

Same as {ItemInfo}, but if there is a short caption (see {ImageTitle}) it only inserts the text following the delimiter formed by two consecutive colons (::). Should only be used in the body or contents section.

{ImageHtmlName}

Inserts the page name of the image if the album files were created with the tag option "[OutputName={ImageName}](#)" (see topic [Album Options](#)). Should be used in the contents section.

{DefaultExt}

Inserts the default extension used for creating the Web pages. Can be used in any part of the template.

{PageImageIndex}

Inserts the image's page index number (i.e. position in the album page). Should only be used in the body section.

{PageImageCount}

Inserts the total number of images used per page. Should only be used in the body section.

{AuthorName}

Inserts the text entered by the user in the "Author name" field on the [Options tab](#). Can be used in any part of the template.

{AuthorEmail}

Inserts the text entered by the user in the "E-mail address" field on the [Options tab](#). Can be used in any part of the template.

{AuthorHomepage}

Inserts the text entered by the user in the "Homepage" field on the [Options tab](#). Can be used in any part of the template.

{AuthorCopyright}

Inserts the text entered by the user in the "Copyright message" field on the [Options tab](#). Can be used in any part of the template.

{DateToday}

Inserts the current date. The date format is defined by the text entered by the user in the "Date format" field on the [Options tab](#). Can be used in any part of the template. Can be used in any part of the template.

{AppName}

Inserts the program name *Album Express*. Can be used in any part of the template.

{AppVersion}

Inserts the *Album Express* version number. Can be used in any part of the template.

{Merge:VariableName}

This special field is replaced by the contents of the specified variable, denoted here by VariableName. If the variable does not exist, the field is removed and nothing is inserted in its place. You can use this field to insert values set in the [Album Options](#) section through the use of the Merge and Variables settings.

{Calc:Expression}

This special field is replaced by the result of the mathematical expression, which is denoted here by Expression. The expression can contain other fields that produce numerical values. Only whole numbers (integers) are produced through this feature. See the topic [Mathematical Operators](#) for more information.

Example; supposing `{ImageTagWidth}` is equal to 150, the following field will insert the value 165:
`{Calc:{ImageTagWidth}+15}`

{ClearTags:SomeText}

If SomeText contains tags, this function will remove them from the text. The result is then inserted in the place of the field.

{UseBest:"Text1";"Text2"}

If Text1 is empty, the UseBest function will insert the text contained in Text2, otherwise it inserts the contents of Text1. Use quotes around each text and separate the two with a semicolon. This function is typically used in conjunction with other fields. Example:

```
{UseBest:"{ClearTags:{_ImageTitle}}";"{_ImageName}"}
```

{UseGreater:Value1;Value2}

This function works with whole numerical values (integers) only. If Value2 is bigger than Value1, it is inserted in the place of the field. Value1 is inserted if it is the bigger value.

{UseSmaller:Value1;Value2}

This function works with whole numerical values (integers) only. If Value2 is smaller than Value1, it is inserted in the place of the field. Value1 is inserted if it is the smaller value.

{_IsSinglePage}

Conditional field. Returns the field name if the album is contained in a single page, and an empty value if it is divided into several pages. This field is useful to determine whether a line containing it should be added to the album page or not. Should be used in a comment tag; i.e. `<!--{_IsSinglePage}-->`. Can be used in any part of the template.

{_IsMultiPage}

Conditional field. Returns an empty value if the album is contained in a single page, and the field name if it is divided into several pages. This field is useful to determine whether a line containing it should be added to the album page or not. Should be used in a comment tag; i.e. `<!--{_IsMultiPage}-->`. Can be used in any part of the template.

{_IsMultitem}

Conditional field. Returns an empty value if the current page only contains a single item (usually an image), and the field name if the page contains several items. This field is useful to determine whether a line containing it should be added to the album page or not. Should be used in a comment tag; i.e. `<!--{_IsMultitem}-->`. Can be used in any part of the template.

{_IsFirstPage}

Conditional field. Returns the field name if the current page is the first one in the album, and an empty value if it not the first page. This field is useful to determine whether a line containing it should be added to the album page or not. Should be used in a comment tag; i.e. `<!--{_IsFirstPage}-->`. Can be used in any part of the template.

{_IsMiddlePage}

Conditional field. Returns the field name if the current page is not the first or last one in the album, and an empty value if it is a middle page. This field is useful to determine whether a line containing it should be added to the album page or not. Should be used in a comment tag; i.e. `<!--{_IsMiddlePage}-->`. Can be used in any part of the template.

{_IsLastPage}

Conditional field. Returns the field name if the current page is the last one in the album, and an empty value if it is not the last page. This field is useful to determine whether a line containing it should be added to the album page or not. Should be used in a comment tag; i.e. `<!--{_IsLastPage}-->`. Can be used in any part of the template.

{_IsImageFile}

Conditional field. Returns the field name if the grid item is a recognized image file (width/height values > 0), and an empty value if it is not. This field is useful to determine the type of HTML tag you need to use to display the grid item. Should be used in a comment tag; i.e. `<!--{_IsImageFile}-->`. Should only be used in the body section.

{_IsLandscape}

Conditional field. Returns the field name if the image width is greater than its height, and an empty value if it is not. This field is useful to determine the arrangement of page elements based on the image layout. Should be used in a comment tag; i.e. `<!--{_IsLandscape}-->`. Should only be used in the body section.

{_IsPortrait}

Conditional field. Returns the field name if the image height is greater than its width, and an empty value if it is not. This field is useful to determine the arrangement of page elements based on the image layout. Should be used in a comment tag; i.e. `<!--{_IsPortrait}-->`. Should only be used in the body section.

{_IsHtmlFile}

Conditional field. Returns the field name if the grid item represents an HTML file, and an empty value if

it is not. This field is useful to determine the type of HTML tag you need to use to represent the grid item. Should be used in a comment tag; i.e. `<!--{ _IsHtmlFile }-->`. Should only be used in the body section.

{ _IsNoItemInfo }

Conditional field. Returns an empty value if the grid item does not have a description assigned to it. This field is useful to define an alternative text when no description is available. It is typically used in conjunction with `{ _ItemInfo }`; you can see how it is used in the template Default.htm. Should be used in a comment tag; i.e. `<!--{ _IsNoItemInfo }-->`. Should only be used in the body section.

2.4.5 Template Wizards

Sometimes you may want to complete a template's content just before it is actually used for building an album. You can use the Template Wizard to do just this. You define a Wizard field by using the "`^?[...]`" tags. The Wizard is built from all such fields encountered in the template. It is best to only use these tags in the Options section of the main template page (the one that gets displayed in the template control on the [Main Settings](#) page). To use the returned value in across the template (and sub-templates), assign the tag values to a variable in the Options section; see the [Variables](#) setting.

Wizard controls can be simple text fields, [masked fields](#), multiline fields, combobox fields, listbox fields, and checkbox fields. They are defined by parameters placed between the "`^?[parameters]`" field delimiters. Parameters can have the following structure:

```
FieldCaption
(Options)FieldCaption
FieldCaption=DefaultValue
FieldCaption=ListValues
FieldCaption==ListValues
```

The FieldCaption represents the text used for the field's caption. DefaultValue represents the text displayed in the field, which the user can edit. ListValues represent the text that is used to create the list of values displayed by comboboxes, listboxes, and checkboxes; each value must be separated by a `|` character. You can optionally precede a list item with an underscore character to make it the default value. Options can define the order in which fields should be displayed, the nature of the control, its height as well as other properties. When multiple options are specified, you must use a semicolon to separate them. The following field options are available:

T=M	Type is multiline control without word wrap.
T=W	Type is multiline control with word wrap.
T=C	Type is combobox (requires ListValues parameter).
T=L	Type is listbox (requires ListValues parameter).
T=A	Type is array of checkboxes (requires ListValues parameter).
T=O	Type is file open dialog box.
T=S	Type is file save dialog box.
F=Filter	Defines a file dialog filter. Use double quotes around the filter.
H=Number	Defines a field height measured in lines.
M=Mask	Defines a field with an input mask. Use double quotes around the mask .
Number	Defines field position in Wizard.

Fields Examples:

^?[Type a name]

Simple blank text field (one line of text)

^?[(M="(000)_000-0000;0;*)Enter telephone number]

Simple field with [input mask](#)

^?[(T=W)Type memo text]

Multiline field with word wrap.

^?[(T=M;H=5)Type memo text]

Multiline field with a height of 5 lines and no word wrap.

^?[Choose a value=Value1|Value2|Value3|_DefaultValue4|Value5]

Combobox field with 5 items in the list. DefaultValue4 is selected by default because it is preceded by an underscore character. The single equal sign means the user can also enter values that are not contained in the list.

^?[(T=C)Choose a value==Value1|Value2|_DefaultValue3|Value4|Value5]

Combobox field with 5 items in the list. DefaultValue3 is selected by default because it is preceded by an underscore character. The double equal sign means the user can only choose one of the values contained in the list.

^?[Prompt==Value1|Value2|Value3|_DefaultValue4|Value5]

Listbox field with 5 items in the list. DefaultValue4 is selected by default because it is preceded by an underscore character.

^?[(T=A)Prompt=Value1|_DefaultValue2|Value3|_DefaultValue4|Value5]

Checkbox field with 5 items in the list. Items that are checked by default are preceded by an underscore character. The result returned by this type of field contains all the checked items delimited by a semi-colon and double-quotes around each item.

^?[(T=O;F="Mailbox Files (*.toc;*.idx;*.pmm;*.snm)]*.toc;*.idx;*.pmm;*.snm")Choose a mailbox]

Open File field.

^?[(T=O;S=M;F="Mailbox Files (*.toc;*.idx;*.pmm;*.snm)]*.toc;*.idx;*.pmm;*.snm")Choose a mailbox]

Open multiple files field.

^?[(T=S;F="Text Files (*.txt)]*.txt")Save as]

Save file field.

^?[(3)Field1] ^?[(1)Field2] ^?[(2)Field3]

Three fields with position in Wizard defined in parentheses.

2.4.6 Masked Input Fields

This feature is available for the [Template Wizards](#). Use the mask to restrict the characters a user can enter into the masked edit control to valid characters and formats. If the user attempts to enter an invalid character, the edit control does not accept the character. Validation is performed on a character-by-character basis.

A mask consists of three fields with semicolons separating the fields. The first part of the mask is the mask itself. The second part is the character that determines whether the literal characters of a mask are saved as part of the data. The third part of the mask is the character used to represent unentered characters in the mask.

These are the special characters used in the first field of the mask:

Character	Meaning in mask
-----------	-----------------

- ! If a ! character appears in the mask, optional characters are represented in the input control as leading blanks. If a ! character is not present, optional characters are represented in the input control as trailing blanks.
- > If a > character appears in the mask, all characters that follow are in uppercase until the end of the mask or until a < character is encountered.
- < If a < character appears in the mask, all characters that follow are in lowercase until the end of the mask or until a > character is encountered.
- <> If these two characters appear together in a mask, no case checking is done and the data is formatted with the case the user uses to enter the data. The character that follows a character is a literal character. Use this character to use any of the mask special characters as a literal in the data.
- L The L character requires an alphabetic character only in this position. For the US, this is A-Z, a-z.
- I The I character permits only an alphabetic character in this position, but doesn't require it.
- A The A character requires an alphanumeric character only in this position. For the US, this is A-Z, a-z, 0-9.
- a The a character permits an alphanumeric character in this position, but doesn't require it.
- C The C character requires an arbitrary character in this position.
- c The c character permits an arbitrary character in this position, but doesn't require it.
- 0 The 0 character requires a numeric character only in this position.
- 9 The 9 character permits a numeric character in this position, but doesn't require it.
- # The # character permits a numeric character or a plus or minus sign in this position, but doesn't require it.
- :
- The : character is used to separate hours, minutes, and seconds in times. If the character that separates hours, minutes, and seconds is different in the regional settings of the Control Panel utility on your computer system, that character is used instead.
- /
- The / character is used to separate months, days, and years in dates. If the character that separates months, days, and years is different in the regional settings of the Control Panel utility on your computer system, that character is used instead.
- ;
- The ; character is used to separate the three fields of the mask.
- _
- The _ character automatically inserts spaces into the text. When the user enters characters in the field, the cursor skips the _ character.

Any character that does not appear in the preceding table can appear in the first part of the mask as a literal character. Literal characters must be matched exactly in the edit control. They are inserted automatically, and the cursor skips over them during editing. The special mask characters can also appear as literal characters if preceded by a backslash character (\).

The second field of the mask is a single character that indicates whether literal characters from the mask should be included as part of the text for the edit control. For example, the mask for a telephone number with area code could be the following string:

```
(000)_000-0000;0;*
```

The 0 in the second field indicates that the Text property for the edit control would consist of the 10 digits that were entered, rather than the 14 characters that make up the telephone number as it appears in the edit control.

A 0 in the second field indicates that literals should not be included, any other character indicates that they should be included.

The third field of the mask is the character that appears in the edit control for blanks (characters that

have not been entered). By default, this is the same as the character that stands for literal spaces. The two characters appear the same in an edit window. However, when a user edits the text in a masked edit control, the cursor selects each blank character in turn, and skips over the space character.

NOTE:

When working with multibyte character sets, such as Japanese shift-JIS, each special mask character represents a single byte. To specify double-byte characters using the L, I, A, a, C, or c specifiers, the mask characters must be doubled as well. For example, LL would represent two single-byte alphabetic characters or a one double-byte character. Only single-byte literal characters are supported.

2.4.7 Mathematical Operators

The special [{Calc:Expression}](#) field supports the following mathematical operators and functions:

Predefined value:

PI

Accepted operators:

+ , - , * , / , ^ , MOD, DIV

The following functions are supported; it doesn't matter if you use lower or upper case:

COS, SIN, SINH, COSH, TAN, COTAN, ARCTAN, EXP, LN, LOG10, LOG2, LOGN, SQRT, SQR, POWER, INTPOWER, MIN, MAX, ABS, TRUNC, ROUND, INT, CEIL, FLOOR, HEAV (heav(x) is 0 for $x < 0$, 1 for $x \geq 0$), SIGN (sign(x) is 0 for $x = 0$, 1 for $x > 0$, -1 for $x < 0$), ZERO (zero(x) is 0 for $x = 0$, 1 for $x \neq 0$), LZERO (lzero(x) is 0 for $x < 0$, 1 for $x \geq 0$), RND (rnd(x) = int(x) * Random) RANDOM (random(X) = Random; the argument X is not used)

Functions like MIN and MAX take two values; you must use a semi-colon ";" to separate them. For example: MAX(2;3)

Trigonometric functions take values in radian units.

Acknowledgments:

The mathematics feature was made possible thanks to the superb freeware parsing function developed by the following people: Renate Schaaf (schaaf@math.usu.edu), Alin Flaider (alfaidar@datalog.ro), and Stefan Hoffmeister (Stefan.Hoffmeister@Uni-Passau.de).

2.5 Miscellaneous

2.5.1 Thumbnail Generator

The Thumbnail Generator is a handy utility for creating thumbnail images and scaled-down/up copies from a wide range of popular picture formats. You can open it from the "File | Thumbnails" menu in Album Express.

The Thumbnail Generator interface is divided into two sections. The left side lets you select the folder and image files used for creating the thumbnails. A tab gives you access to the settings page, which you can use to define the thumbnail's filename prefix or suffix, maximum height and width, JPEG compression level, brightness, contrast, sharpness, and rotation angle. The right side provides a preview of the original image currently selected, as well as the resulting thumbnail image, which you display by clicking on the corresponding tab.

The window title bar displays information about the current image shown. When the "Thumbnail preview" page is displayed, you'll see what file name it will have when saved, based on your settings, as well as its pixel dimensions and file size.

Click on the Make button to create thumbnails of the file(s) you've highlighted in the "Look in" window. Use the Make All button to create thumbnails of all the files listed in the selected folder.

By default, PNG files are saved in their native format. All other image types are saved as JPEG files. If you want PNG files saved in JPEG format, right-click with your mouse on the "Thumbnail preview" image and check the "Save PNG as JPEG" option in the shortcut menu.

Helpful Tips

- You can select multiple images in the file-list window by holding down the Ctrl key and clicking on each file with the left mouse button. Use the "Make" button to create thumbnails of only the files you selected. The "Make All" button does not take into account selected files; it processes all the files listed in the window.
- Leave the "Save in" field blank if you want to save the thumbnails in the same folder as your images. Thumbnail Generator automatically creates a folder if it does not already exist. You can specify relative path names.
- The resize algorithm (or resample filter) determines how pixels in a picture are affected when it is resized. Some algorithms add a blurring effect while others maintain the hard edges between different areas of a picture. The algorithm that generally gives the best results is "Lanczos3". However, depending on the nature of your picture, you may get better results (smaller file size or higher image quality) by trying out one of the other algorithms. Use the [Smart] option to let the software determine the best algorithm. You can see the result produced by the chosen algorithm by looking at the picture on the "Thumbnail preview" panel.
- If your original image is a Jpeg file, you can produce a lossless (no degradation of image quality) \pm 90/180 rotation by choosing the Lossless setting in the Algorithm field. Note that there might be a slight reduction in size of the resulting image if its dimensions do not match the DCT (Discrete Cosine Transform) block unit.
- Double-click on a trackbar's label to reset its value.
- You can use the shortcut menu from the "Original image" preview area to shrink the picture so that it fits in the display area.
- Use the "Copy Image Tag" command from the shortcut menu of the Original/Preview image, to copy the HTML tag of the current picture to the Clipboard.

Supported File Formats

The following file formats are supported by Thumbnail Generator:

- JPEG (*.jpg;*.jpeg;*.jpe)
- JPEG 2000 (*.jpc;*.j2k;*.jp2)
- CompuServe Graphics Interchange (*.gif)
- Portable Bitmap (*.pbm;*.pgm;*.ppm)
- Portable Network Graphics (*.png)
- Tagged Image File Format (*.tif;*.tiff;*.fax)

- Truevision Targa (*.tga;*.targa;*.vda;*.vst)
- Windows Enhanced Meta File (*.emf)
- Windows Icon File (*.ico)
- Windows Meta File (*.wmf)
- Windows or OS/2 Bitmap (*.bmp;*.dib;*.rle)
- Wireless Bitmap images (*.wbmp)
- Zsoft PC Paintbrush (*.pcx)

2.5.2 Image Preview Window

You can preview images listed in the grid (on [page #2](#)) through the Preview window. Just double-click on the image name in the grid or choose Quick View from the grid's shortcut menu. Many popular image formats are supported. Image formats that are not supported and other file types are displayed through the Windows Quick View utility or the application to which they are associated.

You can drag the window borders to resize the image. The size you set will then be used to limit the maximum width and height of images displayed in it. These settings as well as the window position are remembered when you restart Album Express. Note that the picture preview only shrinks images that don't fit within the defined size limits, it does not enlarge them beyond their normal size.

The window's shortcut menu provides commands to display images in full size, or to zoom in/out, and to reload the current picture.

2.5.3 Date and Time Filters

You can customize the format of the date/time displayed in albums by changing the filter in the "Date format" field on the [Options-1](#) screen. The following format specifiers are supported:

Specifier	Displays
c	Displays the date using the format given by the ShortDateFormat global variable, followed by the time using the format given by the LongTimeFormat global variable. The time is not displayed if the fractional part of the DateTime value is zero.
d	Displays the day as a number without a leading zero (1-31).
dd	Displays the day as a number with a leading zero (01-31).
ddd	Displays the day as an abbreviation (Sun-Sat) using the strings given by the ShortDayNames global variable.
dddd	Displays the day as a full name (Sunday-Saturday) using the strings given by the LongDayNames global variable.
dddddd	Displays the date using the format given by the ShortDateFormat global variable.
dddddd	Displays the date using the format given by the LongDateFormat global variable.
m	Displays the month as a number without a leading zero (1-12). If the m specifier immediately follows an h or hh specifier, the minute rather than the month is displayed.
mm	Displays the month as a number with a leading zero (01-12). If the mm specifier immediately follows an h or hh specifier, the minute rather than the month is displayed.
mmm	Displays the month as an abbreviation (Jan-Dec) using the strings given by the ShortMonthNames global variable.
mmmm	Displays the month as a full name (January-December) using the strings given by the LongMonthNames global variable.
yy	Displays the year as a two-digit number (00-99).
yyyy	Displays the year as a four-digit number (0000-9999).

h	Displays the hour without a leading zero (0-23).
hh	Displays the hour with a leading zero (00-23).
n	Displays the minute without a leading zero (0-59).
nn	Displays the minute with a leading zero (00-59).
s	Displays the second without a leading zero (0-59).
ss	Displays the second with a leading zero (00-59).
t	Displays the time using the format given by the ShortTimeFormat global variable.
tt	Displays the time using the format given by the LongTimeFormat global variable.
am/pm	Uses the 12-hour clock for the preceding h or hh specifier, and displays 'am' for any hour before noon, and 'pm' for any hour after noon. The am/pm specifier can use lower, upper, or mixed case, and the result is displayed accordingly.
a/p	Uses the 12-hour clock for the preceding h or hh specifier, and displays 'a' for any hour before noon, and 'p' for any hour after noon. The a/p specifier can use lower, upper, or mixed case, and the result is displayed accordingly.
ampm	Uses the 12-hour clock for the preceding h or hh specifier, and displays the contents of the TimeAMString global variable for any hour before noon, and the contents of the TimePMString global variable for any hour after noon.
/	Displays the date separator character given by the DateSeparator global variable.
:	Displays the time separator character given by the TimeSeparator global variable.
'xx'	Characters enclosed in single quotes are displayed as-is, and do not affect formatting.

Format specifiers may be written in upper case as well as in lower case letters – both produce the same result

2.5.4 File Filters Wildcards

A wildcard is a character that can represent one or more characters in a filename. Windows recognizes two wildcards:

- The asterisk (*) represents zero, one or more characters that a group of files has in common.
- The question mark (?) represents a single character that a group of files has in common.

For examples, the pattern *.jpg will match all files that have the extension .jpg. The pattern A*.jpg will only match JPEG files that have a filename starting with letter A. The pattern ???*.jpg will only match JPEG files that have a filename with three characters.

You can include multiple wildcards in a pattern. For example, *.* will match all files of any type. And the pattern ???*. * will match all files of any type that have exactly three characters in their filename.

You will find more information about these wildcards in manuals about MS-DOS and Windows.

2.5.5 Command-line Parameters

You can specify as many parameters as the command line can take. Each parameter must be separated by a space.

<i>FileName</i>	Opens the specified settings file, ftp log, or template file.
<i>/USER=FolderName</i>	By default, Album Express 4 stores per-user customization files under the Application Data folder: <SYSTEMDRIVE>\Documents and Settings\ <i><user></i> \Application Data or here under Windows Vista: <SYSTEMDRIVE>\Users\ <i><user></i> \AppData\Roaming Use the /USER switch to specify a different location for the Album Express customization and temporary files. This option is particularly useful if you work

with sensitive data (point to a folder on an encrypted drive) or simply don't want to leave files behind on the computer you're using (point to a removable drive like a USB key). Alternatively, you can also use this feature to share the same customization files with multiple users across a network. The folder name can include system variables; example: %AllUsersProfile%\Album

/INI=FileName

Specify an alternative INI file. If you don't indicate a path, the program's directory is assumed. If you indicate a path name, there should not be any spaces in it (if this is the case, use the short DOS name instead). You do not need to specify an extension (it is always INI).

2.5.6 Understanding Browsers.dat

The Browsers.dat file is available if you need to change the way a browser is launched by Album Express, or to define the parameters for a new browser. If you delete this file, then Album Express will use the default settings for the most popular browsers (Internet Explorer, Netscape, Mozilla, and Opera). This topic explains the structure of the file and the meaning of its fields.

Currently, the Browsers.dat file accepts up to 9 fields under each section. The format is identical to an .ini file. You have the section name that is between square brackets and can be used in the "Preview in browser" field on the [Options page](#) of Album Express. The values below the section name define how the browser is launched and how to communicate through DDE (if the feature is supported). The value of the field name comes after the equal sign. For the main browsers (Internet Explorer, Netscape, Mozilla, and Opera), Album Express stores default values for each field. You can override these values by defining the field under the corresponding section for the browser. When a field is not defined, the default values are used. Below you can see the default values for Internet Explorer:

```
[IExplore]
Command=iexplore.exe -nohome
UseDDE=1
Application=IExplore
DdeCommand=
DdeExec="%1" ,,%2,0,,,,
Topic=WWW_OpenURL
Application_New=
DdeExec_New=
Topic_New=
```

Fields Explained

Command

This field is used to specify the program file that must be launched and possible command-line switches (useful to inhibit the loading of the default homepage, or turn off the splash screen). If you have several versions of a browser, you can create a different section for each one and then include the full browser path+filename in the Command value. The Command value is used to open the first instance of a browser window when DDE is enabled, and to open each window when DDE is disabled.

UseDDE

A value of "1" tells Album Express that the browser supports DDE. A value of "0" means DDE is not supported by the browser (or should not be used).

The following fields are only checked if UseDDE=1...

Application

The value corresponds to the DDE server name. If the section name does not match the server name, then you must define this field with the appropriate value. The list below shows the server names for the main browsers:

Internet Explorer: IExplore
Internet Explorer 2.x: Mosaic
Netscape 6.x: Netscape6
Netscape (4.x and older): Netscape
Mozilla: Mozilla
Opera: Opera

DdeCommand

Only use this field if the command to launch the first instance of a browser for DDE communication is different from the one used in the "Command" field. At the time of writing this, only Opera has this requirement in order to operate reliably.

DdeExec

This is the list of parameters that need to be sent to the DDE server to open a URL. The %1 represents the place marker for the URL and %2 for the window value. A window value of 0 indicates that the URL should be opened in a new window (or tab) and a value of -1 tells it to reuse the active window (this feature is not supported by Netscape 6.x). All the main DDE browsers support the same DdeExec parameters. If you always want your URLs to open in the same window, you can override the default value by adding the actual window code instead of the place marker. Example:

DdeExec="%1",-1,0,,,

Topic

This is the name of the command that is sent to the DDE server to initiate a specific action. All the main DDE browsers support the same Topic value: WWW_OpenURL. As a result, you normally never need to include this field. However, if you ever encounter a browser that supports another Topic name, then you can use this field to override the default value.

It's unlikely that you will ever need to use the three last fields:

Application_New

DdeExec_New

Topic_New

They are useful if the field values for opening a new window are different from those for opening a link in the same window. None of the current popular browsers need these, though it appears Internet Explorer 6.x supports the topic name "WWW_OpenURLNewWindow", but it's not necessary to use it. However, these fields are available in case a new browser requires different values.

3 Purchasing and License Agreement

3.1 Ordering Information

Pricing

Prices indicated in this Help file and accompanying documentation are valid for Album Express version 4.0 and may change when the next update is released. Please use the [News](#) feature, or visit the [Album Express Web site](#) to find out if a new update is available and to check its pricing.

Single-user license: \$24.95 USD

See the [Site Licenses](#) topic for special site license pricing.

Orders are processed for us by Plimus and RegNow. These U.S. order-taking company uses the

highest level of protection throughout the entire order processes, from all order pages, through the storage of customer information, and credit card processing which is done by Wells Fargo. This ensures that your private data will remain confidential. Plimus and RegNow offers a variety of payment options: MasterCard, Visa, EuroCard, American Express, Discover/Novus, Diners Club, JCB, US\$ Checks, Eurochecks, Wire Transfers. Payments can be made Online, by Fax, by Mail or by Phone. Download instructions are delivered via email immediately after your payment is received (usually in less than one minute with credit cards). Please ensure that this email won't get deleted by your spam filter!

Go to the following page to order Album Express online:

<http://www.fookes.com/order.php>

Purchase Orders

Plimus and RegNow will also process corporate Purchase Orders. To order, first choose the product you want to purchase then move on to the order form where you enter your address and payment details; on that screen, select Purchase Order as your Method of payment. Follow the instructions and fax your purchase order to Plimus or RegNow.

3.2 Site Licenses

Prices indicated in this Help file and accompanying documentation are valid for Album Express version 4.0 and may change when the next update is released. Please use the [News](#) feature, or visit the [Album Express Web site](#) to find out if a new update is available and to check its pricing.

A site license for Album Express entitles an organization to receive one copy of the distribution package and to duplicate it for the specified number of copies, or to make it available to the specified number of users on a network. Note that a site license is for a single physical site (covers a single organization for an area of up to 100 miles or 160 kilometers in radius) unless you choose the world-wide license (covers everyone in a single organization). See the topic [Ordering Information](#) to find out how you can purchase Album Express.

Users	Price (USD)
1 to 4	\$24.95 each
5 to 19	\$19.00 each
20 to 39	\$15.00 each
40 to 79	\$12.00 each
Over 79	\$ 800.00 (total for single location)
Over 79	\$1,600.00 (total for world-wide site license)

3.3 Refund Policy

All of Fookes Software's products can be evaluated, free of charge, through a trial mode or separate trial version that can be downloaded directly from our web site. Use the trial before you purchase to ensure that the full product will be compatible with your computer systems and satisfy your requirements. If you do not, you accept that the product may not meet your needs and that this will not justify a refund or chargeback. If you experience an issue with our software, then please contact our [customer support](#) service for help in solving the problem.

All sales are final and refunds are provided only for accidental duplicate orders. Refunds will only be made to the credit card or PayPal account through which the original purchase was made. An administration fee may apply in such cases to cover processing costs and third-party commissions.

Ordering a software license signifies your acceptance of this Refund Policy.

3.4 End User License Agreement

This End User License Agreement (this "Agreement"), governs the terms and conditions of the Licensee's access and use of Album Express software ("Album Express"), and is made between the Licensee ("you") and Fookes Software, La Petite Fin 27, 1637 Charmey, Switzerland ("Fookes Software"). However, if you are using a Trial Version as or on behalf of an entity, and/or have registered for any other license as or on behalf of an entity, such as a corporation, partnership, limited liability company or other entity, the term "you" used below refers to the entity which will be bound by this Agreement. You represent and warrant that you have power and authority to enter into this Agreement on behalf of the entity. This Agreement does not address any third-party or free or open source software separately licensed to you.

By clicking the "I accept the Agreement" option during installation and/or by accepting the Agreement on the online order form and/or by using Album Express, you confirm your acceptance of, and agree to be bound by, this Agreement. If you do not agree to this Agreement or if you do not understand it, do not purchase, install, or use Album Express.

1. Definitions

"Software" means the version of Album Express in executable form and documentation.

"Evaluation Period" means a limited evaluation period of usually no more than one month, beginning on the day that you first execute the Software.

"Trial Version" means a version of the Software, so identified, to be used only to review, demonstrate and evaluate the Software for a limited time period. The Trial Version may have limited features and will cease operating after an Evaluation Period due to an internal mechanism within the Trial Version.

"Use" means loading, installing, executing, displaying, performing and/or transmitting the Software for your internal business purposes, and not for distribution or resale.

2. Software License Grants

2.1. Trial Version Use

Subject to the terms and conditions of this Agreement, Fookes Software hereby grants you a non-sublicensable, nonexclusive, nontransferable license to Use the Trial Version without charge and for evaluation purposes only in a non-production test environment. Any other use of the Trial Version is expressly prohibited. You may make as many copies of the Software as is reasonably necessary for evaluating the Software. Files created by the Trial Version are for evaluation purposes only and, unless you purchase a license, must be destroyed once evaluation is complete.

2.2. Commercial Version Use

This license is subject to your compliance with the terms and conditions of this Agreement, including payment.

Fookes Software hereby grants you a license to Use the Software on one computer owned by or leased to You, except as follows.

If the Software is stored on a computer other than a network server then the primary user may also Use the Software on a home and/or laptop computer, provided the Software is used on only one machine at a time. Otherwise, a separate license is required for each single computer on which the Software will be used.

You may transfer all your rights to use the Software to another individual or legal entity provided that: (a) you also transfer (i) this Agreement, (ii) the Software, including all copies, upgrades, updates and prior versions to such individual or entity; (b) you retain no upgrades, updates or copies, including back-ups and copies stored on a computer; and (c) the receiving party accepts the terms and conditions of this Agreement and any other terms and conditions under which you purchased a valid license to the Software.

2.3 License Restrictions

The Software is licensed, not sold. This Agreement only gives you the rights according to the chosen license type (section 2); Fookes Software reserves all other rights. Especially you may not: (a) modify, adapt, translate, rent, lease or sublicense (including offering the Software to third parties on an application service provider, web service or time sharing basis) the Software except to the extent explicitly permitted in any of the licenses above; (b) disable or block any licensing, rights management or control features of the Software except as an intended part of the Software's programming features; (c) assign, loan, resell, transfer, distribute or otherwise make accessible the Software, except as set forth in sections 2.2 and 6; (d) modify, decompile, disassemble or reverse engineer the Software; (e) remove or modify any legal notices in the Software; or make more copies of the Software other than for back-up purposes, except as set forth in sections 2.1, 2.2, and 6. You may make a reasonable number of back-up copies of the Software, provided your back-up copies are not installed or used for other than archival purposes, and are kept in a safe location that is not accessible to users without a valid license.

Once you have purchased a license, you may access the Software through a network, provided that you have obtained individual licenses covering all users who will Use the Software from that network. For instance, if five different users will access the Software on the network, you will need one or more licenses to cover five users, whether they use the Software at different times or concurrently.

It is your responsibility to make a back-up copy of the Software installation file and your registration details off your computer and place these in a safe location that is not accessible to other users.

3. Customer Support / Software Maintenance

Fookes Software provides customer support that is generally free of charge and exclusively by email, to the extent that Fookes Software at its sole discretion shall determine to be reasonable. Fookes Software has no obligation to provide customer support for discontinued products and old Software versions that were released before the latest update or upgrade.

You bear all responsibility for ensuring that email replies from Fookes Software can reach you. Fookes Software cannot be held responsible if its emails to you are blocked by your Internet service provider (ISP), or your email server, or your email program's spam/junk-mail filters. If necessary, you will provide an alternative email address that can receive emails from Fookes Software.

You acknowledge and agree that Fookes Software will not produce any solutions, bug fixes, and/or maintenance updates, for previous versions of Software upon availability of an update or upgrade.

4. Refund Policy

The Trial Version is available for download free of charge from the Fookes Software web site. It is intended to allow potential customers to evaluate before purchase, whether the Software is compatible with their computer systems, and will satisfy their requirements. As a result, all sales are final and refunds are provided only for accidental duplicate orders. Refunds will only be made to the credit card or PayPal account through which the original purchase was made. An administration fee may apply in such cases to cover processing costs and third-party commissions.

Ordering a software license signifies your acceptance of this Refund Policy.

5. Ownership

The Software is proprietary to Fookes Software. The Software is licensed, not sold, to you notwithstanding any reference herein to "purchases." You acknowledge and agree that: (a) the Software is protected under U.S. copyright and other national and international copyright laws; (b) Fookes Software and its licensors retain all copyrights and other intellectual property rights in the Software; (c) there are no implied licenses under this License, and any rights not expressly granted to you hereunder are reserved by Fookes Software; (d) you acquire no ownership or other interest (other than your license rights) in or to the Software; and (e) Fookes Software owns all copies of the Software, however made. You agree that you will not, at any time, contest anywhere in the world Fookes Software's ownership of or rights in the Software. You have no rights hereunder to use any trademark or service mark belonging to Fookes Software.

6. Distribution of Trial Version

Provided that you are distributing the then-current Trial Version (without any feature-unlocking file and/or instructions) you are hereby licensed to make as many copies of the Trial Version as you wish; give exact copies of the original Trial Version to anyone; and distribute the Trial Version in its unmodified form via electronic means (Internet, BBS's, software distribution libraries, CD-ROMs, DVDs, etc.). You may charge a small distribution fee for the Trial Version, but you must not represent in any way that you are selling the software itself. All copies must reproduce copyright notices.

You may not make the Trial Version available on any site, CD-ROM, DVD, or with any package, or with any other medium or service, which makes available or contains viruses, virus source code, virus construction programs, virus creation material, software cracks, spyware, malware or other malicious code or material.

Permission to distribute the Trial Version is not transferable, assignable, saleable, or franchisable, and any attempt to do so is void. Each entity wishing to distribute the Trial Version must independently satisfy the terms of the foregoing distribution license.

7. Updates and Upgrades

To Use an update or an upgrade of the Software ("Update"), you must possess a valid license to the previous version of the Software you want to update or upgrade. You agree that once you start using an Update, you lose your right to Use a previous version of the updated/upgraded Software. You also agree that you will not transfer a previous version of the Software to another person or entity, and that you may Use the Update only in accordance with the terms of this Agreement.

8. Compliance

You shall conduct your business in compliance with all laws and regulations in any way applicable to the Software or to the performance of your obligations under this Agreement. Without limiting the generality of the foregoing, you shall not take any action that would violate, or cause Fookes Software to be in violation of, any applicable law of the United States or any other jurisdiction including but not limited to the U.S. Foreign Corrupt Practices Act and all import and export laws, regulations and restrictions of the United States or any foreign agency or authority.

9. U.S. Government Rights

This is a notice to U.S. Government End Users:

The Software and the documentation which accompanies the Software are "Commercial Items," as that term is defined at 48 C.F.R. §2.101, consisting of "Commercial Computer Software" and "Commercial Computer Software Documentation," as such terms are used in 48 C.F.R. §12.212 or 48 C.F.R. §227.7202, as applicable. Consistent with 48 C.F.R. §12.212 or 48 C.F.R. §§227.7202-1 through 227.7202-4, as applicable, the Commercial Computer Software and Commercial Computer

Software Documentation are being licensed to U.S. Government end users (a) only as Commercial Items and (b) with only those rights as are granted to all other end users pursuant to the terms and conditions herein. Fookes Software, La Petite Fin 27, 1637 Charmey, Switzerland.

10. WARRANTY DISCLAIMER AND LIMITATION OF LIABILITY

THE SOFTWARE IS PROVIDED ON AN "AS IS" BASIS. FOOKES SOFTWARE DISCLAIMS AS FAR AS LEGALLY PERMISSIBLE ALL WARRANTIES RELATING TO THE SOFTWARE, WHETHER EXPRESSED, IMPLIED OR STATUTORY, INCLUDING BUT NOT LIMITED TO ANY IMPLIED WARRANTIES OF SATISFACTORY QUALITY, MERCHANTABILITY, FITNESS FOR A PARTICULAR PURPOSE, COMPATIBILITY OR NON-INFRINGEMENT . FOOKES SOFTWARE DOES NOT WARRANT THAT THE SOFTWARE WILL MEET YOUR REQUIREMENTS OR BE UNINTERRUPTED, SECURE OR ERROR-FREE. NEITHER FOOKES SOFTWARE NOR ANYONE ELSE WHO HAS BEEN INVOLVED IN THE CREATION, PRODUCTION, OR DELIVERY OF THE SOFTWARE ("SUPPLIERS") SHALL BE LIABLE FOR ANY SPECIAL, INDIRECT, CONSEQUENTIAL, INCIDENTAL OR PUNITIVE DAMAGES (INCLUDING BUT NOT LIMITED TO LOST REVENUES, PROFITS AND/OR SAVINGS) ARISING OUT OF THE USE OR INABILITY TO USE SUCH SOFTWARE, EVEN IF FOOKES SOFTWARE HAS BEEN ADVISED OF THE POSSIBILITY OF SUCH DAMAGES OR CLAIMS. THE PERSON USING THE SOFTWARE BEARS ALL RISK AS TO THE QUALITY AND PERFORMANCE OF THE SOFTWARE.

THE ENTIRE LIABILITY OF FOOKES SOFTWARE AND ITS SUPPLIERS, AND YOUR EXCLUSIVE REMEDY, WITH RESPECT TO THE USE OF THE SOFTWARE OR ANY BREACH OF THIS AGREEMENT ARE LIMITED TO THE AMOUNT ACTUALLY PAID BY YOU, IF ANY, FOR USE OF THE SOFTWARE. YOU HEREBY RELEASE FOOKES SOFTWARE AND SUCH OTHER PERSONS FROM ANY AND ALL OBLIGATIONS, LIABILITIES AND CLAIMS IN EXCESS OF THIS LIMITATION. YOU AGREE THAT ANY CLAIM OR CAUSE OF ACTION ARISING OUT OF OR RELATED TO USE OF THE SOFTWARE OR THIS AGREEMENT MUST BE FILED WITHIN ONE (1) YEAR AFTER SUCH CLAIM OR CAUSE OF ACTION AROSE OR BE FOREVER BARRED.

YOU ARE SOLELY RESPONSIBLE FOR SELECTION, INSTALLATION AND LAUNCH OF THE SOFTWARE AND FOR BACKING UP YOUR DATA AND FILES, AND HEREBY RELEASE US AND OUR SUPPLIERS FROM ANY LIABILITY OR DAMAGES DUE TO THE LOSS OF ANY SUCH DATA OR FILES.

FOOKES SOFTWARE IS NOT LIABLE FOR ANY INAPPROPRIATE OR ILLEGAL USE OF THE SOFTWARE.

11. Governing Law / Jurisdiction

This Agreement is as far as legally permissible governed by Swiss Law, subject to the express exclusion of the Vienna Sales Convention (United Nations Convention on Contracts for the International Sale of Goods, CISG, 1980.) Exclusive place of jurisdiction shall be the court at the registered office of Fookes Software.

12. Termination

Fookes Software may terminate this Agreement at any time upon default by you of the license provisions of this Agreement, or any other material default by you of this Agreement not cured within thirty (30) days after written notice thereof. Except for Sections 2 and 6, all provisions of this Agreement shall survive termination of this Agreement.

13. Severability Clause

If any provision of this Agreement is or becomes ineffective or if there is an omission from this Agreement, this does not affect the legal validity of the remaining provisions. The ineffective provision will be replaced by an effective provision that is as close as possible in economic terms to the

provision wanted by the parties. The same procedure applies in the case of an omission.

14. General

You shall not assign, delegate or sublicense any of your rights or obligations under this Agreement, by operation of law or otherwise, without prior written consent of Fookes Software, and any attempt without such consent shall be void. Subject to the preceding sentence, this Agreement binds and benefits the permitted successors and assigns of the parties. Fookes Software may change the terms, conditions and pricing relating to the future licensing of its Software and other intellectual property rights, including this Agreement, from time to time. No waiver will be implied from conduct or failure to enforce rights nor is it effective unless in a writing signed on behalf of the party against whom the waiver is asserted.

There are no third-party beneficiaries to this Agreement. Fookes Software is not bound by additional and/or conflicting provisions in any purchase order or other correspondence unless expressly agreed in writing. This Agreement is the complete and exclusive statement of agreement between the parties as to its subject matter and supersedes all proposals or prior agreements, verbal or written, advertising, representations or communications concerning the Software.

Last updated: 04 February 2008

4 Other Information

4.1 Contacting Fookes Software

Answers to most of the questions we receive already exist in our documentation. Before contacting us, we suggest you first look through our Help files and online FAQs; this will help you get a solution in the shortest time possible. Please also verify that you are using the latest software update before reporting a problem.

Please note that Fookes Software representatives cannot provide in-depth end-user training for free. We are able to assist you if you are having a problem that is not covered in the documentation, but we cannot teach you how to use the software, how to modify or create templates, or how to use Album Express for tasks it was not designed to perform. If you have questions about using or learning Album Express, and cannot find an answer in the Help file or FAQ, then please consider joining our [discussion group](#), even if it is just for one question.

Technical support is provided by email, on business days from Monday to Friday. We usually reply within 24 hours, but on occasions it may take up to 3 business days. Please take into account that your "urgent" message may reach us in the middle of the night – we are based in Switzerland (UTC+1). To email us, please use our [mail form](#).

If you need to contact us by post, our office address is as follows:

**Fookes Software
La Petite Fin 27
1637 Charmey
Switzerland**

Please do NOT send **Purchase Orders** to the above address. Album Express sales are handled for us by Plimus Corporation and RegNow. Address and fax details are provided after you select "Purchase Order" as a payment method on the order form, which is available by first going through our [Order page](#). Plimus currently only accepts Purchase Orders for payments equal to or above \$100.00 USD.

4.2 Other Fookes Software Titles

Aid4Mail

Aid4Mail helps you migrate email messages to a different mail client, export them for viewing through IE, MS Excel, or a database, convert them to extract or re-insert attachments, and archive them to save space or for compliance with legal requirements. It supports many mail client programs and processes all messages without losing any information, including those with file attachments and embedded contents like pictures and background images.

<http://www.aid4mail.com/>

Easy Imager

Convert images to other formats and sizes, print text on pictures, import from TWAIN devices, capture screen shots, change Desktop wallpaper, view in screen saver, share slide shows, search for images, associate text descriptions with pictures, create stunning Web photo albums, and more.

<http://www.fookes.com/ezimager/>

NoteTab Light

The ultimate free Notepad replacement and a handy HTML editor. Handle a heap of files with a simple tabbed interface. Search files, strip HTML tags and format text quickly. Formerly called "Super NoteTab". 100% free — no ads and no nags.

<http://www.notetab.com/>

NoteTab Pro

For those who demand the best. NoteTab Pro offers all the features HTML authors, programmers, and other demanding users need to speed up their work. The registered version adds a thesaurus and a multilingual spell checker.

<http://www.notetab.com/>

Mailbag Assistant

If you're buried in e-mail, Mailbag Assistant is guaranteed to save you time and frustration. This user-friendly application complements your mail program and offers powerful tools to search, organize, extract information, and archive your messages.

<http://www.fookes.com/mailbag/>

4.3 Trademarks

Album Express is a trademark of Fookes Software, Switzerland.

Windows is a trademark of Microsoft Corporation registered in the U.S. and other countries.

All other trademarks and service marks are the property of their respective owners.

4.4 Acknowledgements

Many thanks to the following people who provided lots of helpful feedback and/or resources while Album Express was undergoing development and beta testing:

Jody Adair

Ken Brayton

Alan C.

Dennis Cummins

Dave (aka Doc)

Raymond Fitzgerald

Larry Hamilton

Drew Keller

Grant MacKenzie

Jean-Christophe Meylan

*Nick Noakes
Hugo Paulissen
Mark Pulver
Saliers
C. Scagliola
Larry Thomas*

Many other participants, unfortunately too many to list here, also provided useful feedback. Thanks to the help of all these people, Album Express has benefited from many improvements.

"Andy" the Accordionman kindly provided the MIDI files that are packaged with Album Express. You can find more of his work by visiting his Web site at <http://www.accordionman.net/>

David Nourse was a great help in writing short program descriptions that manage to give a good idea of what Album Express is about. His writing skills are much appreciated. The Press Release was produced by Al Harberg, a real expert in this field (www.dpdirectory.com). He also provided useful comments about Album Express during the beta period.

Album Express, which is developed in Delphi (a Borland product), also benefits from several excellent third-party components. The grid components are part of the Orpheus package distributed by TurboPower (www.turbopower.com). The text control is based on the TSyntaxMemo component developed by David Brock (www.dbrocksoftware.com). The FTP component is taken in part from the Internet Direct (Indy) package. This is an open source internet component suite offering popular internet protocols (www.nevrona.com/indy). The integrated preview window and the image processing code used in the Thumbnail Generator is based on code from the ImageEn library. This library provides image file I/O for popular file formats, printing, scanning, and image processing features (www.hicomponents.com). The Setup program is made with the Inno Setup package (www.jrsoftware.org) developed by Jordan Russell.

Index

- * -

* 39

- ? -

? 39

- 1 -

1. Main Settings 9

- 2 -

2. List of Pictures 10

- 3 -

3. Page Details 11

- 4 -

4. Make Album 12

- 5 -

5. Albums List 15

- A -

Acknowledgements 48

Aid4Mail 48

Album file name 11

Album folder 12

Album Options 22

Also number first album page 16

Author's e-mail address 47

- B -

Background image 11

Base URL 11

Browser after Quick Build 16

Build album 12

buy Album Express 41

- C -

Calculate album size 12

Column headers 8

Command-line Parameters 39

Contacting Fookes Software 47

Creating Templates 21

Creating thumbnails 36

Customer support e-mail address 47

- D -

Date and Time Filters 38

Default extension 16

Default template editor 16

Default.htm 20

Demo-MIDI.htm 20

- E -

Easy Imager 48

Edit menu 19

Editor 21

End User License Agreement 43

EULA 43

- F -

FAQ 7

Feedback e-mail address 47

fields 27

File filters 9

File Filters Wildcards 39

File menu 18

Frames.htm 20

Frequently Asked Questions 7

FTP 13

- H -

Help menu 20
Hint line 8
Host name 13
How to Uninstall 5

- I -

Image Preview Window 38
Indexed Images.htm 20
Indexed Pages.htm 20
Installation 1
Integrated template editor 18
Introduction 1

- K -

Keywords 11

- L -

License Agreement 43
Lossless JPEG rotation 36
Lowercase URLs 15

- M -

Mailbag Assistant 48
Main header fields 8
Marketing e-mail address 47
Masked Input Fields 34
Max. image height 16
Max. image width 16
Menu bar 8
Message body text 8
Message fields 27
Message grid 8
Multi-user environments 1

- N -

New 18
News 18
NoteTab Light 48

NoteTab Pro 48

- O -

Open 18
Opening a template 21
Options-1 15
Options-2 16
order Album Express 41
Ordering Information 41
Other Fookes Software Titles 48
Overriding path names 21

- P -

Page title 11
Parameters 39
Password 13
Photo Page.htm 20
Pictures per page 11
Preview album 12
Preview images 38
Preview in browser 15
Process images 16
Program Layout 8
purchase Album Express 41

- Q -

Quick Build 18
Quick Start 6

- R -

Refund Policy 42
Relative paths 15
Remote host 13
Restore layout 15
Resume upload 18

- S -

Sales e-mail address 47
Sample Templates 20
Save 18
Save as 18

Save descriptions with images 16
Search.htm 20
Setup Command-Line Parameters 3
Setup Exit Codes 5
Site Licenses 42
SlideShow.htm 20
Status bar 8
Storage Location for User Data 1
Store options in Registry 16
System requirements 1

- T -

Tab bar 8
Technical support e-mail address 47
Template editor 18, 21
Template Fields 27
Template options 22
Template structure 21
Template Wizards 33
Thumbnail Generator 36
Tool bar 8
Trademarks 48
Transfer Old Settings to Album Express 4 1
Trial Version Limitations 1

- U -

Uninstall 5
Upload album 12
Upload Album (tab 4) 13
Upload new media files only 16
Uploading files 13
Use HTML entities 16
Use template 9
UTC 8
UTC - Universal Coordinated Time 8

- W -

WebSlides.htm 20
Wildcards 39
world-wide site license 42